

DEPARTMENT OF SURGERY LEADERSHIP

- Department of Surgery Faculty
- Affiliated Columbia & Cornell Faculty
- Directors
- PAs, NPs, and Nurse Coordinators
- Coordinators, Administrators, Managers, and Specialists

Craig R. Smith, MD
 Chairman, Department of Surgery; Valentine Mott Professor of Surgery; Johnson & Johnson Distinguished Professor

LEADERSHIP

Tracey Arnell, MD
 Assistant Professor of Surgery; Chief, Division of Acute Care Surgery; Vice Chair, Medical Education; Chairman, Committee on Appointments and Promotions; Director, General Surgery Residency Program

M. Valeria Simone, MD
 Assistant Professor of Clinical Surgery; Associate Director, General Surgery Residency Program

Marlene Haselbauer
 Residency Program Coordinator

Randi Krapf, RN
 Director, Simulation in Surgical Education

Roman Nowygrad, MD, FACS
 Professor of Surgery; Director, Medical Student Clinical Clerkship

Lawrence Beilis
 Chief Financial Officer

Karen Burke
 Business Manager

Debra Keller, MPA
 Director, Academic Appointments & Human Resources

Harris Leitner, MPA
 Director, Revenue Enhancement

Kirsten Roberts
 Director, Budget and Finance

Wayne Tang
 Director, Research Administration and Special Projects

John A. Chabot, MD
 VP, ColumbiaDoctors; Chief, Division of GI/Endocrine Surgery; David V. Habib Professor of Clinical Surgery; Executive Director, Pancreas Center; Attending Surgeon, Center for Advanced Surgery, Lawrence Hospital

DIVISION AND SECTION CHIEFS

Tomoaki Kato, MD
 Abdominal Organ Transplantation

Tracey D. Arnell, MD
 Acute Care Surgery

Sheldon Marc Feldman, MD
 Breast Surgery and Melanoma & Sarcoma

Michael Argenziano, MD
 Cardiac Surgery

Emile Bacha, MD
 Cardiothoracic Surgery

Spencer E. Amory, MD
 General Surgery

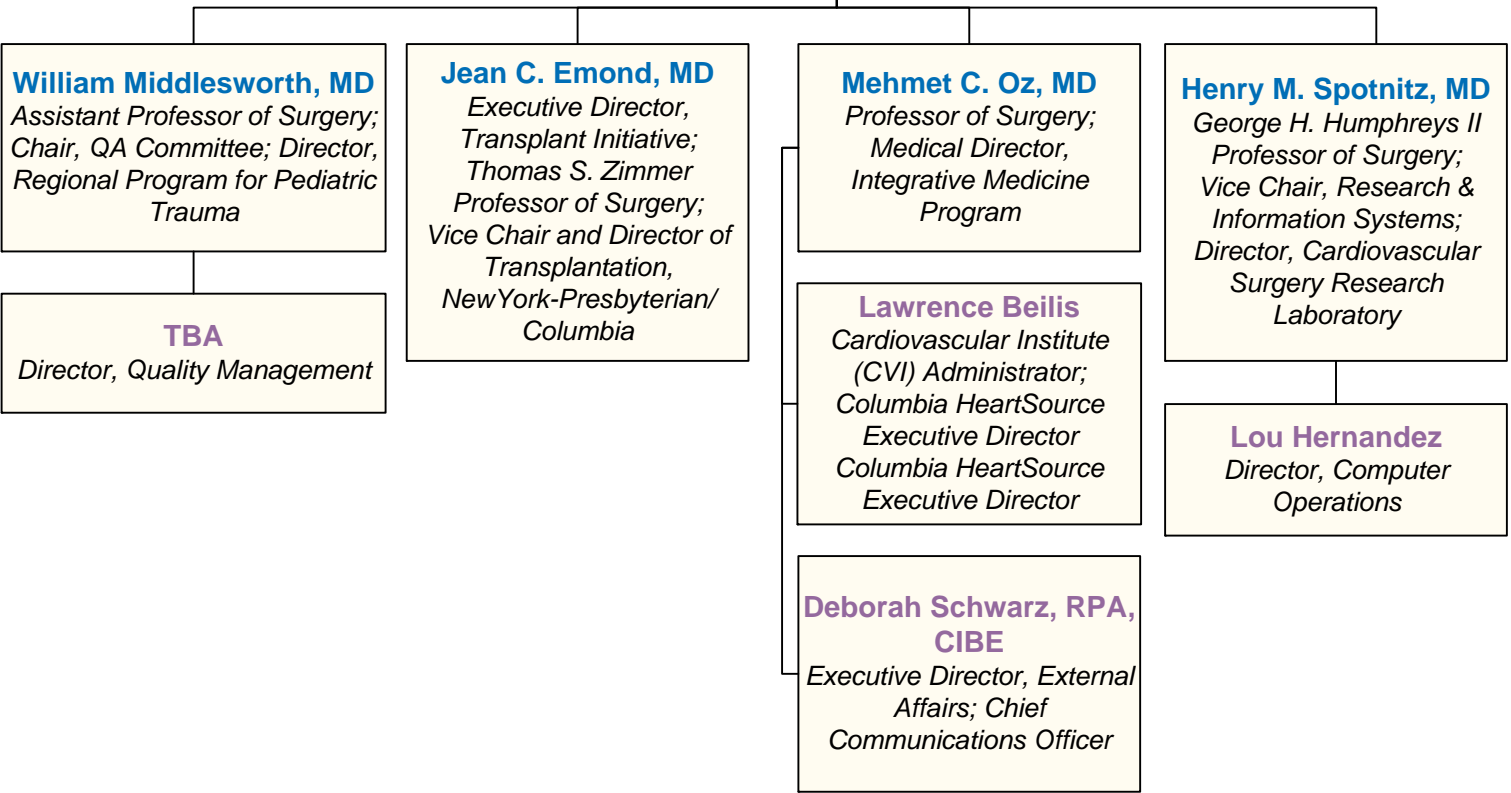
Joshua Sonett, MD
 General Thoracic Surgery

DEPARTMENT OF SURGERY LEADERSHIP

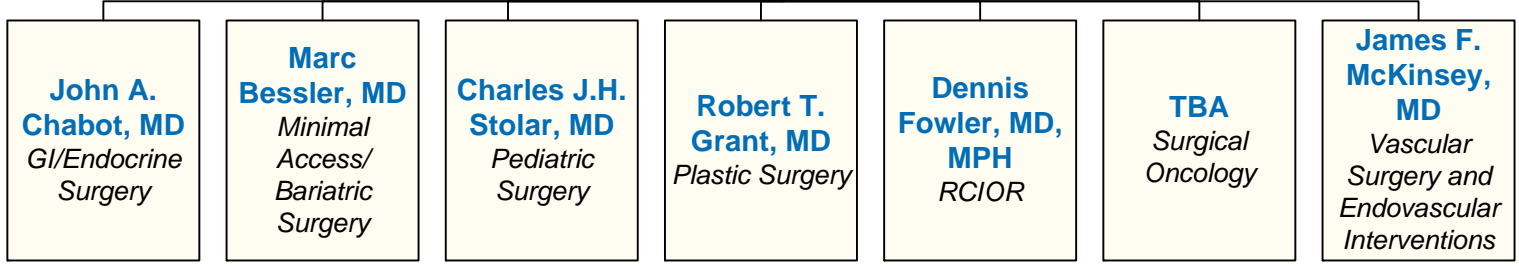
- Department of Surgery Faculty
- Affiliated Columbia & Cornell Faculty
- Directors
- PAs, NPs, and Nurse Coordinators
- Coordinators, Administrators, Managers, and Specialists

Craig R. Smith, MD
 Chairman, Department of Surgery; Valentine Mott Professor of Surgery; Johnson & Johnson Distinguished Professor

LEADERSHIP



DIVISION AND SECTION CHIEFS



ABDOMINAL ORGAN TRANSPLANTATION

Jean C. Emond, MD

Executive Director, Transplant Initiative; Thomas S. Zimmer Professor of Surgery; Vice Chair and Chief of Transplantation, New York-Presbyterian/Columbia

Robert S. Brown, Jr., MD, MPH

Chief, Center for Liver Disease and Transplantation; Medical Director, Transplant Initiative; Frank Cardile Professor of Medicine & Pediatrics (in Surgery)

Tomoaki Kato, MD

Chief, Division of Abdominal Organ Transplantation; Professor of Surgery; Surgical Director, Liver and Gastrointestinal Transplantation

Patricia A. Harren, DNP

Assistant Professor of Nursing; Director of Clinical Operations, Center for Liver Disease and Transplantation

**LIVER ADULT MEDICAL TEAM
(DOVE)**

Robert S. Brown, Jr., MD, MPH

Director, Center for Liver Disease and Transplantation; Medical Director, Transplant Initiative; Frank Cardile Professor of Medicine & Pediatrics (in Surgery)

Daniel Cherqui, MD

Chief, Hepatobiliary Surgery and Liver Transplantation

Margie Fernandez-Sloves, DNP

Senior Transplant Coordinator, Associate Clinical Professor of Nursing

Lorna M. Dove, MD, MPH

Associate Professor of Clinical Medicine (in Surgery); Medical Director, Adult Liver Transplantation

Stephen J. Ferrando, MD

Assistant Professor of Clinical Psychiatry

Alyson Fox, MD

Assistant Professor of Medicine

Silvia Hafliker, MD

Assistant Clinical Professor of Psychiatry

**PEDIATRIC LIVER/INTESTINAL
MEDICAL TEAM
(LOBRITTO)**

Steven J. Lobritto, MD

Associate Professor of Medicine & Pediatrics; Medical Director, Pediatric Liver and Intestinal Transplantation

Mercedes Martinez, MD

Director of Pediatric Intestinal Transplantation; Assistant Professor of Pediatrics

Nadia Ovchinsky, MD

Assistant Professor of Clinical Pediatrics

Kara Ventura, DNP

Senior Transplant Coordinator for Pediatrics, Associate Professor of Clinical Nursing

Michael D. Kluger, MD

Instructor in Surgery

Jay H. Lefkowitz, MD

Professor of Clinical Pathology

Sonja Olsen, MD

Assistant Professor of Medicine

Eva Sotil, MD

Assistant Professor of Clinical Medicine

**LIVER SURGICAL TEAM
(KATO)**

James V. Guarrera, MD

Assistant Professor of Surgery; Surgical Director, Adult Liver Transplantation

Benjamin Samstein, MD

Assistant Professor of Surgery; Surgical Director, Living Donor Liver Transplantation

Rodrigo Sandoval, MD

Assistant Professor of Surgery

Phyllis Tarallo, DNP

Assistant Clinical Professor of Nursing; Director of Women's Health, Center for Liver Disease

Abby Siegel, MD

Assistant Professor of Clinical Medicine; Medical Director, Hepatobiliary Oncology Research

Suki Subramanian, MD

Medical Director, Adult Intestinal Transplantation

Elizabeth Verna, MD, MS

Assistant Professor of Clinical Medicine

Julia Wattacheril, MD, MPH

Assistant Professor of Clinical Medicine

ABDOMINAL ORGAN TRANSPLANTATION

Jean C. Emond, MD

Executive Director, Transplant Initiative;
Thomas S. Zimmer Professor of Surgery;
Vice Chair and Director of Transplantation,
New York-Presbyterian/Columbia

Robert S. Brown, Jr., MD, MPH

Director, Center for Liver Disease and
Transplantation; Medical Director,
Transplant Initiative; Frank Cardile Professor
of Medicine & Pediatrics (in Surgery)

Tomoaki Kato, MD

Chief, Division of Abdominal Organ Transplantation;
Professor of Surgery; Surgical Director, Liver and
Gastrointestinal Transplantation

KIDNEY/PANCREAS ADULT MEDICAL TEAM (COHEN)

David J. Cohen, MD

Associate Professor of Clinical Medicine;
Medical Director, Renal and Pancreas
Transplant Program

Gerald Appel, MD

Professor of Clinical Medicine

Andrew Bomback, MD

Assistant Professor of Clinical Medicine

Pietro Canetta, MD

Instructor in Clinical Medicine

R. John Crew, MD

Assistant Professor of Clinical Medicine

Geoffrey Dube, MD

Assistant Professor of Clinical Medicine

Cheryl Kunis, MD

Assistant Professor of Clinical Medicine

Sumit Mohan, MD

Assistant Professor of Clinical Medicine

Jai Radhakrishnan, MD

Associate Professor of Clinical Medicine

Leonard Stern, MD

Associate Professor of Clinical Medicine

KIDNEY/PANCREAS PEDIATRIC MEDICAL TEAM (TBD)

TBD

Medical Director, Pediatric Renal
Transplantation

Robert Seigle, MD

Assistant Professor of Pediatrics

Mark A. Hardy, MD

Auchincloss Professor of Surgery;
Director Emeritus and Founder,
Renal and Islet Transplantation

Bekir Tanriover, MD

Assistant Professor of Clinical Medicine

Anthony M. Valeri, MD

Associate Professor of Clinical Medicine

Gail S. Williams, MD

Professor of Clinical Medicine

KIDNEY/PANCREAS SURGICAL TEAM (RATNER)

Lloyd E. Ratner, MD

Professor of Surgery; Surgical Director,
Renal & Pancreas Transplant Program

James V. Guarrera, MD

Assistant Professor of Surgery; Surgical
Director, Adult Liver Transplantation

Roman Nowygrod, MD

Professor of Surgery; Director, Medical
Student Clinical Clerkship

Benjamin Samstein, MD

Assistant Professor of Surgery; Director,
Living Donor Liver Transplantation

Rodrigo Sandoval, MD

Instructor in Clinical Surgery

Anthony Watkins, MD

Instructor

PHYSICIAN ASSISTANTS, NURSE PRACTITIONERS, AND NURSE COORDINATORS

Amanda Albreck, PA

Sonia Alford, PA

Jessica Brown, RN

Johanna Camacho-Rivera, RN,
BSN, CCTC

Danielle Camastra, NP

Damaris Carriero, NP

Maureen Carroll, RN, BSN

Lori Cogan, DNP

Khadija Deas-Joseph, PA

Moya Gallagher, RN, BSN, CCTC

Judith Gang, NP

Joanie Garcia, PA-C

Tamara Ghraham, PA-C

Nicole Golden, NP

Joan Kelly, RN, BSN, CCTC

Sandi Levine, NP

Lisa Lisanti, PA

Jennifer Mathis, RN

Elaine Mitchell, BSN

Ashley Myers, PA-C

Meghan O'Donogue, PA-C

Diana Rogers, RN, BSN, CCTC

Anna Rundle, NP

Briane Runge, BSN

Mary Jane Samuels, RN, CCTC

Joanna Seltzer, RN, BSN

Karin Soback, RN, MSN,

CNN

James Spellman, NP

Cynthia Sterling-Fox, NP

Abha Suneja, PA-C

Beth Sweberg, PA

Vanessa Taylor, PA

Monica Velasco, NP

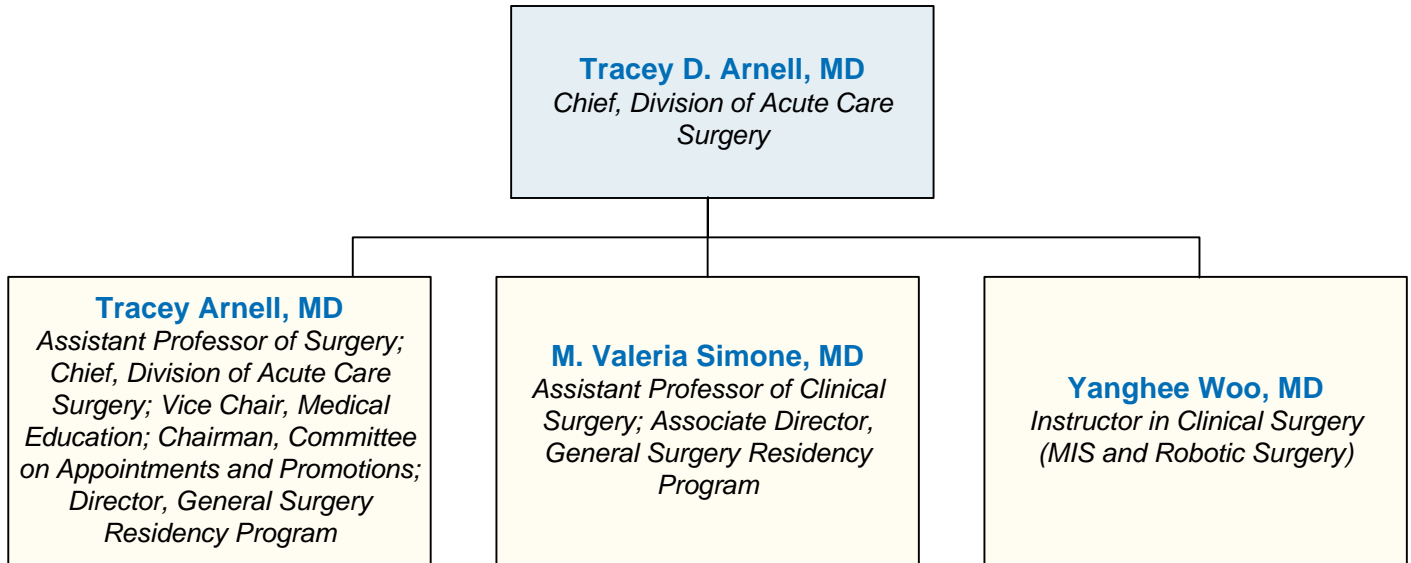
James Walsh, PA

Karen Weisz, NP

Jennifer Wexler, RN

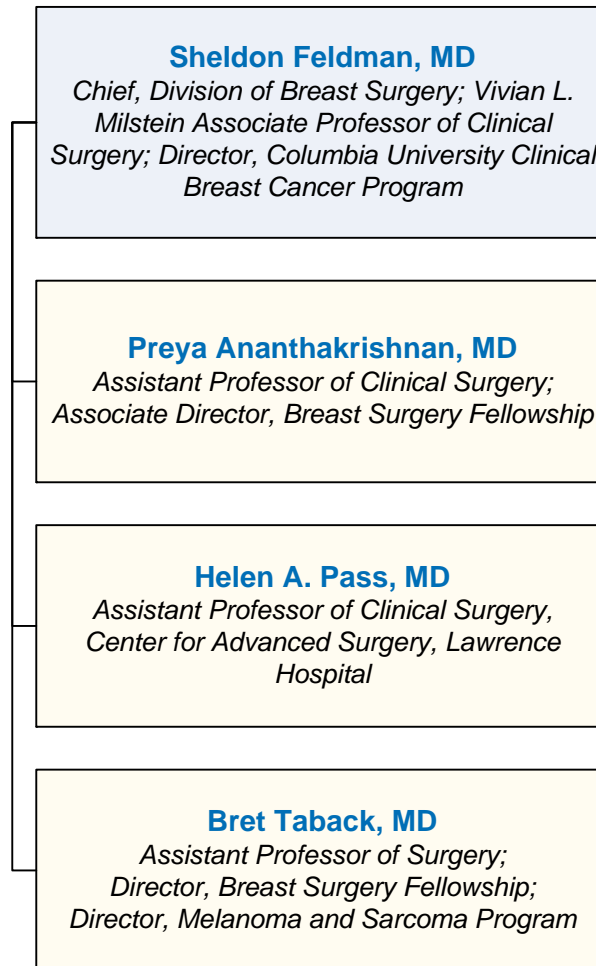
ACUTE CARE SURGERY

- Department of Surgery Faculty
- Affiliated Columbia & Cornell Faculty
- Directors
- PAs, NPs, and Nurse Coordinators
- Coordinators, Administrators, Managers, and Specialists



BREAST SURGERY AND MELANOMA & SARCOMA

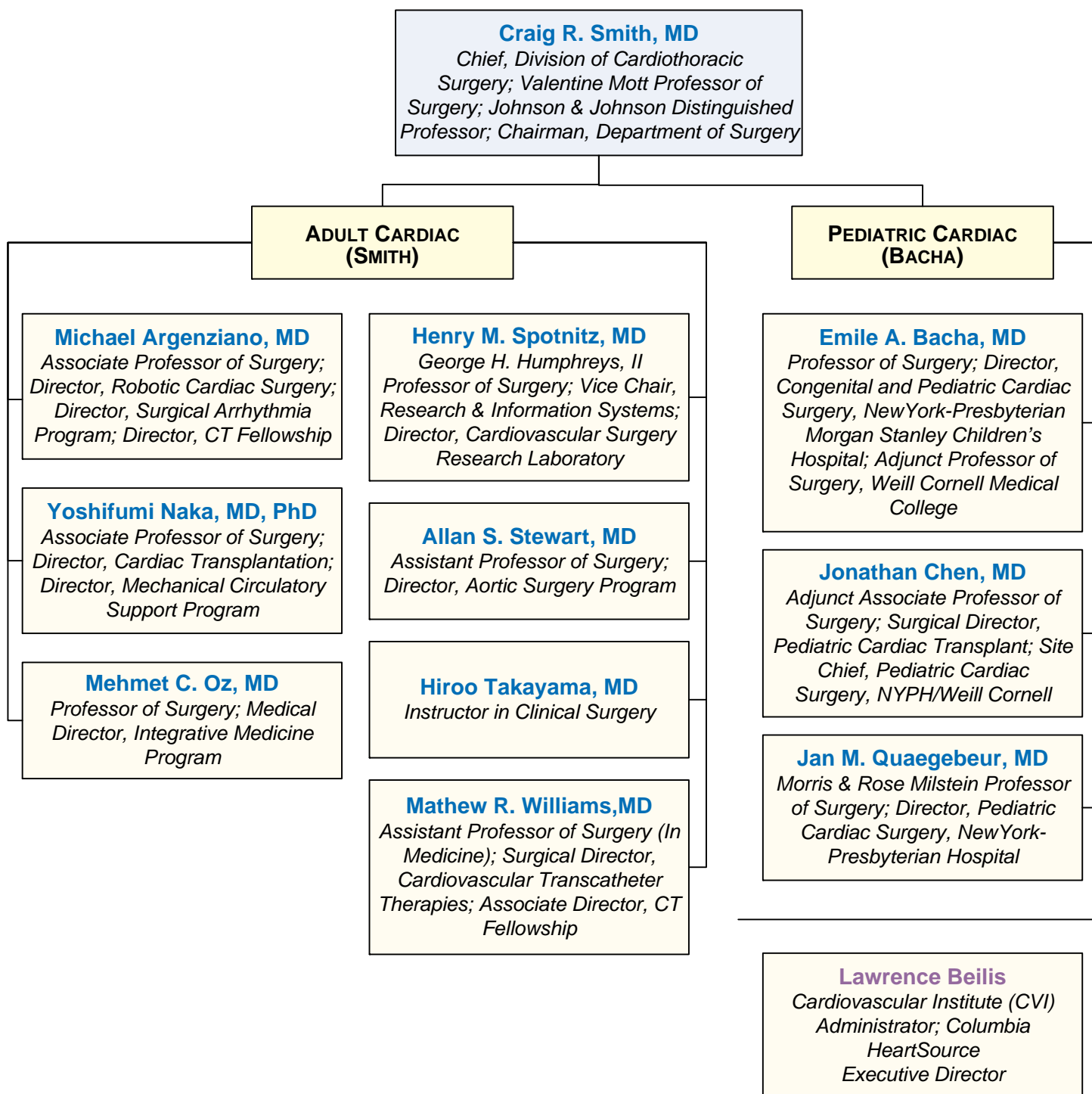
- Department of Surgery Faculty
- Affiliated Columbia & Cornell Faculty
- Directors
- PAs, NPs, and Nurse Coordinators
- Coordinators, Administrators, Managers, and Specialists



**PHYSICIAN ASSISTANTS, NURSE PRACTITIONERS,
AND NURSE COORDINATORS**
Julie Park, NP
Nancy Rosenthal, NP
Maryann Vella, RN, OCN

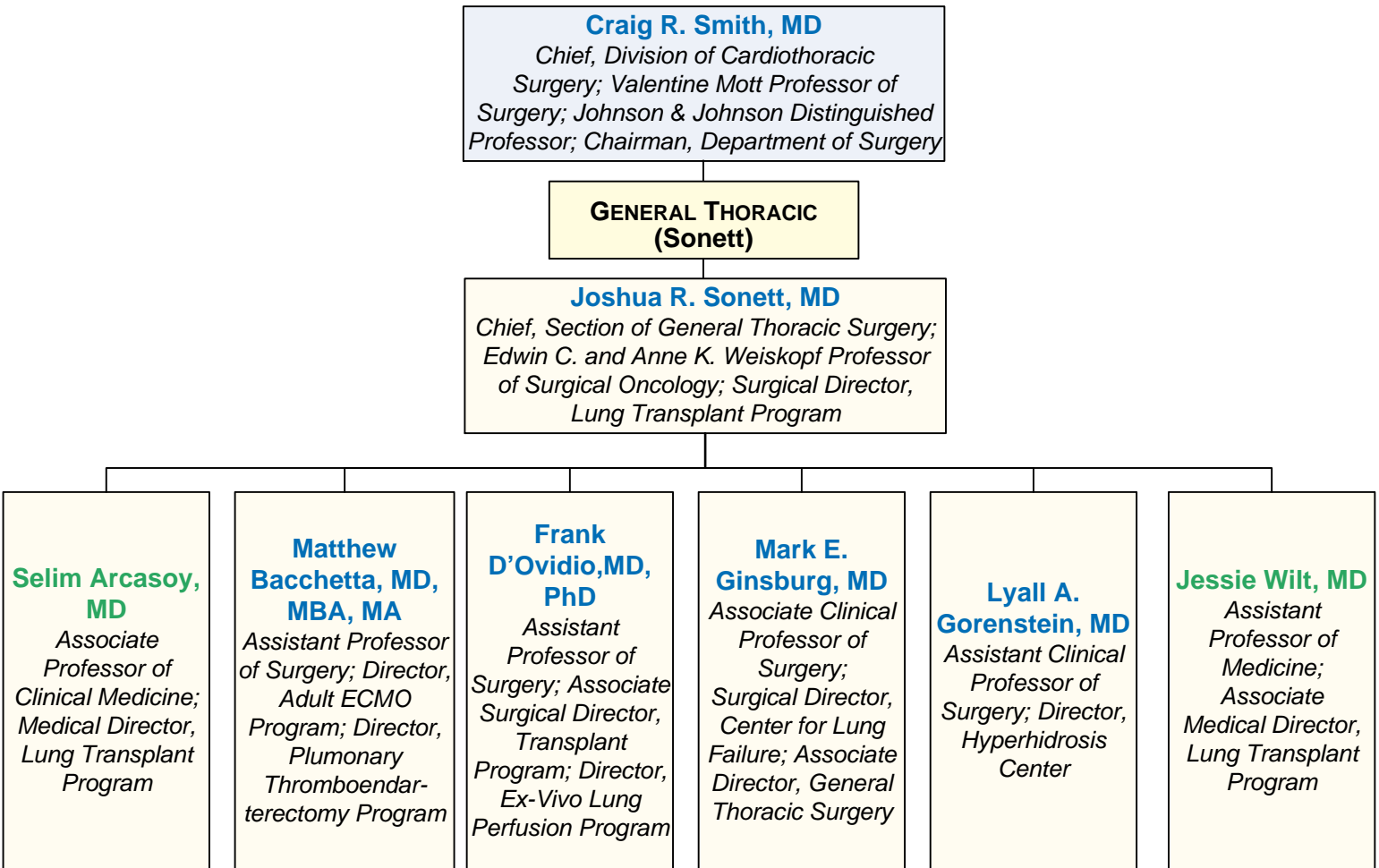
CARDIOTHORACIC SURGERY

- Department of Surgery Faculty
- Affiliated Columbia & Cornell Faculty
- Directors
- PAs, NPs, and Nurse Coordinators
- Coordinators, Administrators, Managers, and Specialists



CARDIOTHORACIC SURGERY

- Department of Surgery Faculty
- Affiliated Columbia & Cornell Faculty
- Directors
- PAs, NPs, and Nurse Coordinators
- Coordinators, Administrators, Managers, and Specialists

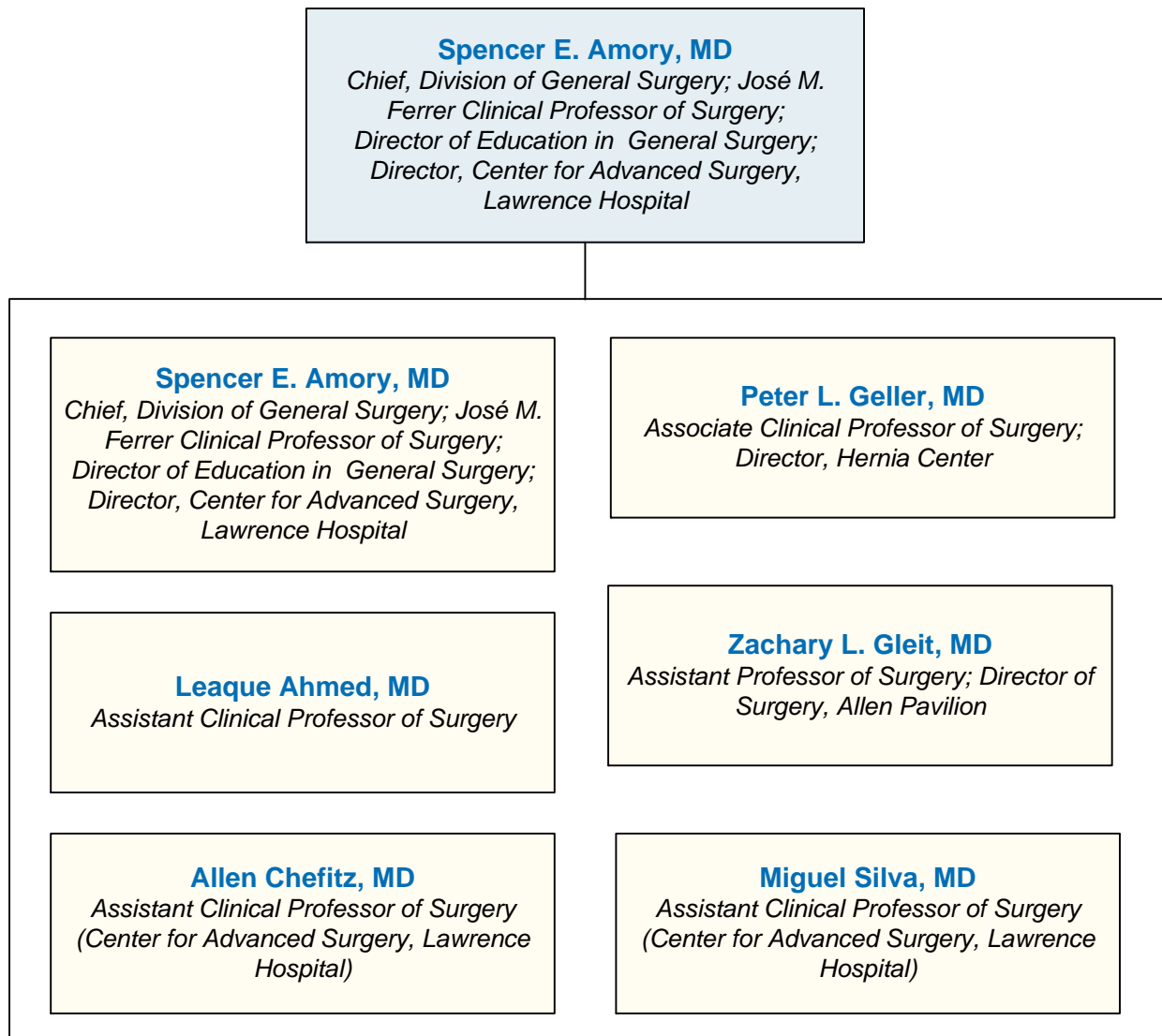


PHYSICIAN ASSISTANTS, NURSE PRACTITIONERS, AND NURSE COORDINATORS

- | | | |
|------------------------------|----------------------------------|--------------------------------|
| Laura Altman, PA | Margaret Flannery, FNP | Allan Mariano, PA |
| Nicholas Astras, PA | Susan Fried, PA | Kevin McGill, PA |
| Eric Beninghof, PA | Kathleen Garcia, PA | Christina Milizia, PA |
| Daryle Blackstock, MPH, PA-C | George Gibbons, PA | Jennifer Murphy, NP |
| Jennifer Bricker, PA | Luisa Godoy, PA | Beth Panoff, FNP |
| Frances Brogan, RN | Lyn Goldsmih, RN | S. Nilani Ravichandran, FNP-BC |
| Sara Bull, NP | Jonathan Halasan, PA | Genevieve Reilly, FNP-C |
| Rozelle Corda, NP | Thomas Hickey, PA | Debra Savarese, PA |
| Tom Cosola, PA | Katharine Idrissi, RN, MSN, CCRN | Beth Sweberg, PA |
| Joseph Costa, PA | Patricia A. Jellen, RNC | Rosie Te-Frey, ANP-C |
| Kirstie Crespo, RN | Steven C. Kantor, PA | Tianna Umann, PA |
| Theresa Daly, NP | Erin Logan, PA | Davide Volpe, PA |
| Kierie Fitzgibbon, PA | | |

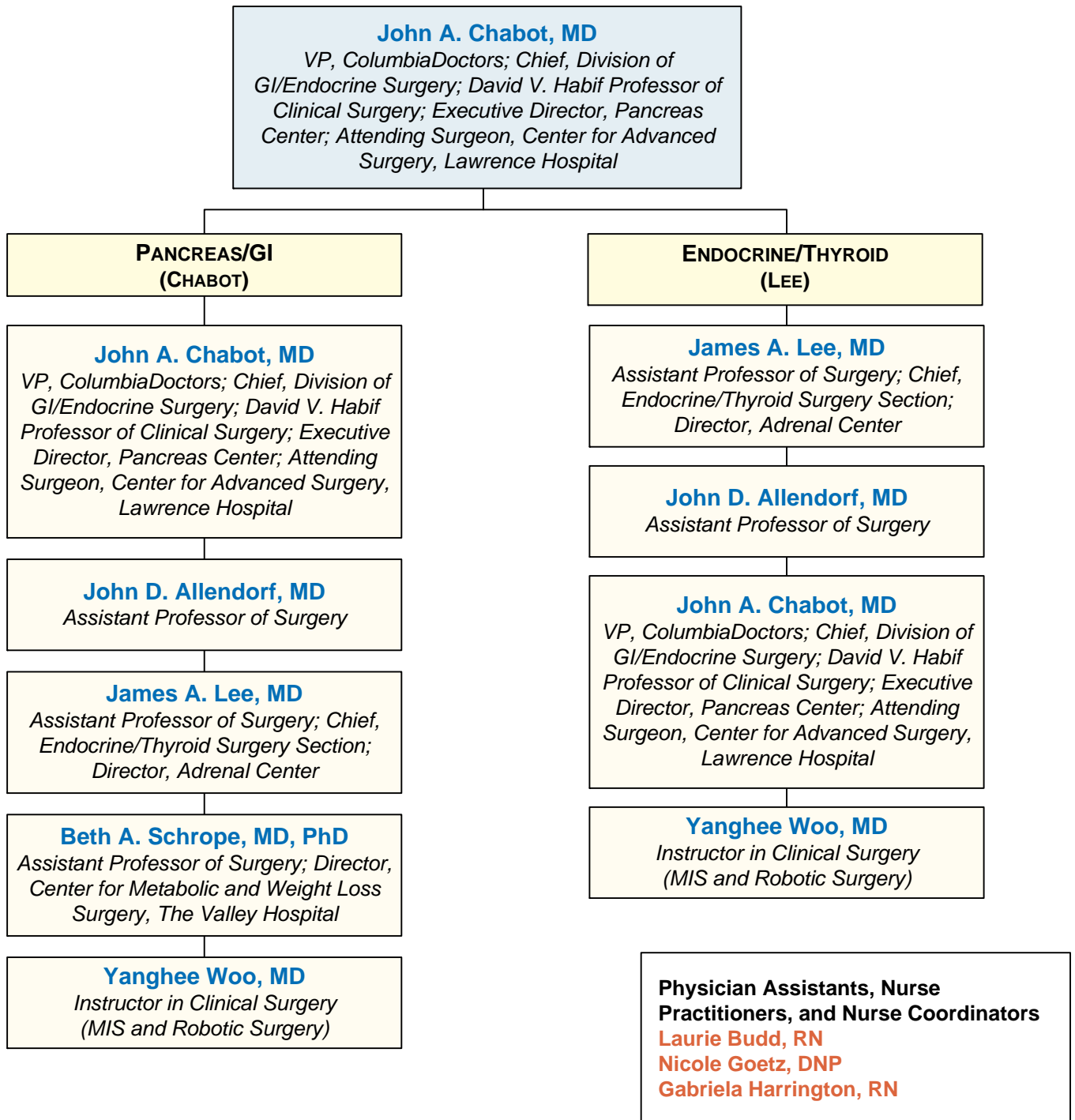
GENERAL SURGERY

- Department of Surgery Faculty
- Affiliated Columbia & Cornell Faculty
- Directors
- PAs, NPs, and Nurse Coordinators
- Coordinators, Administrators, Managers, and Specialists



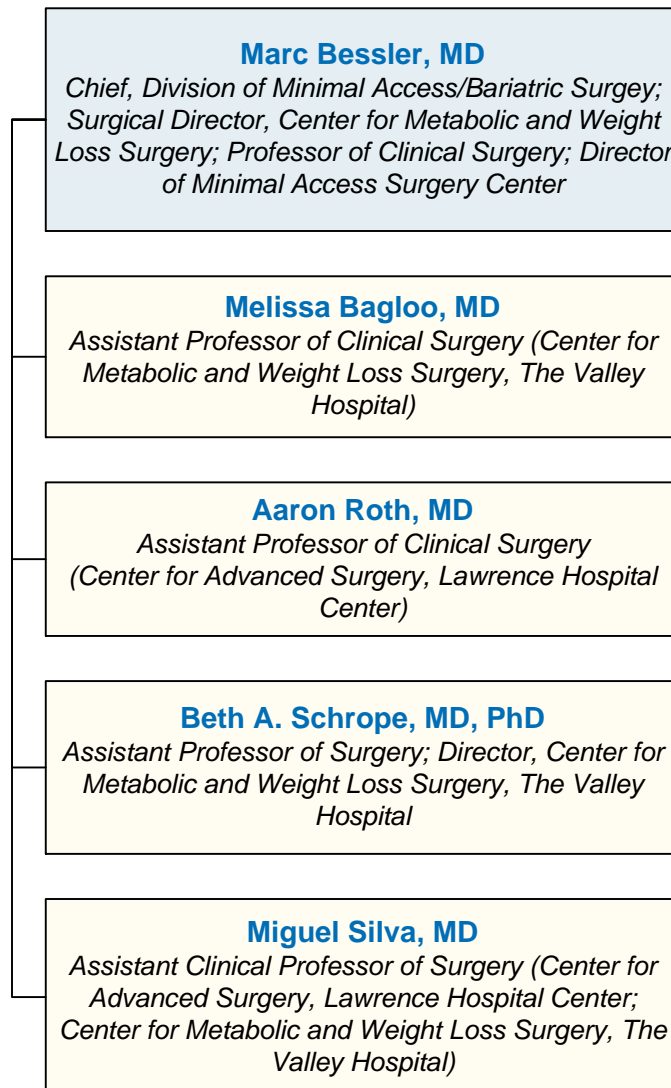
GI/ENDOCRINE SURGERY

- Department of Surgery Faculty
- Affiliated Columbia & Cornell Faculty
- Directors
- PAs, NPs, and Nurse Coordinators
- Coordinators, Administrators, Managers, and Specialists



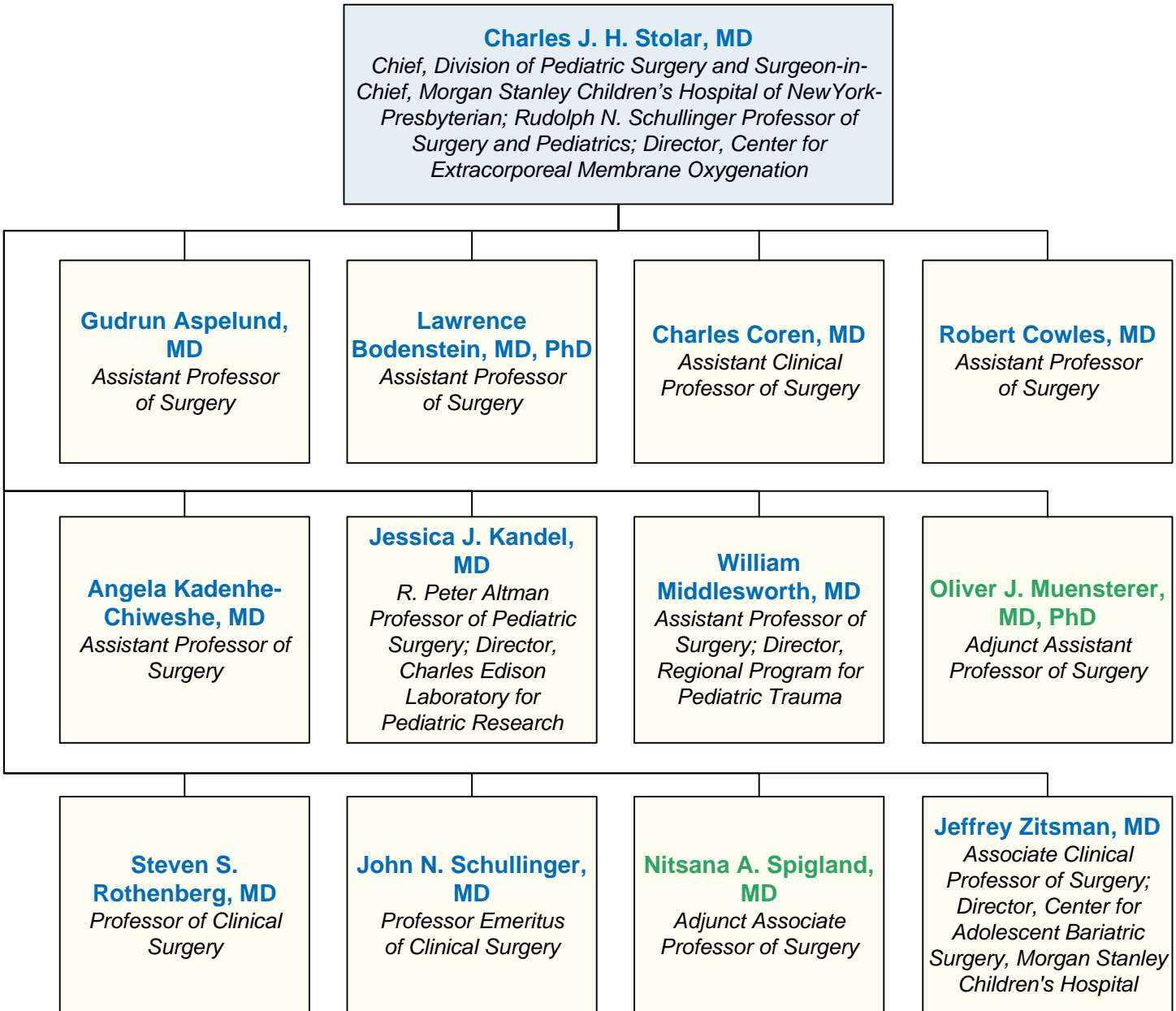
MINIMAL ACCESS/BARIATRIC SURGERY

- Department of Surgery Faculty
- Affiliated Columbia & Cornell Faculty
- Directors
- PAs, NPs, and Nurse Coordinators
- Coordinators, Administrators, Managers, and Specialists



PEDIATRIC SURGERY

- Department of Surgery Faculty
- Affiliated Columbia & Cornell Faculty
- Directors
- PAs, NPs, and Nurse Coordinators
- Coordinators, Administrators, Managers, and Specialists



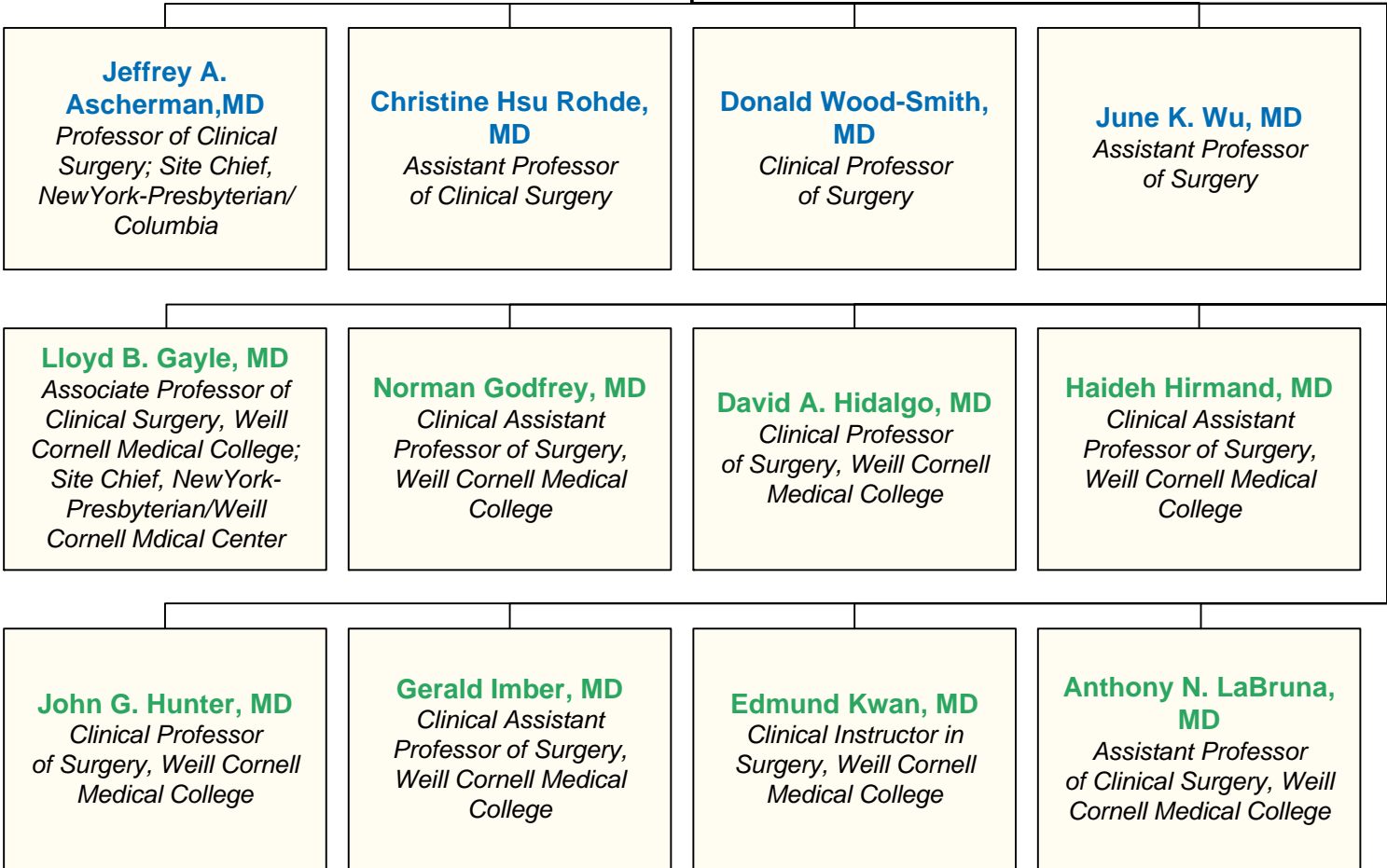
Physician Assistants, Nurse Practitioners, and Nurse Coordinators
Lori Lynch, RN, MS, CPNP
Christine Molloy, RN, MS, CPNP
Jeanne Rubsam, RN, MS, CPNP

PLASTIC SURGERY

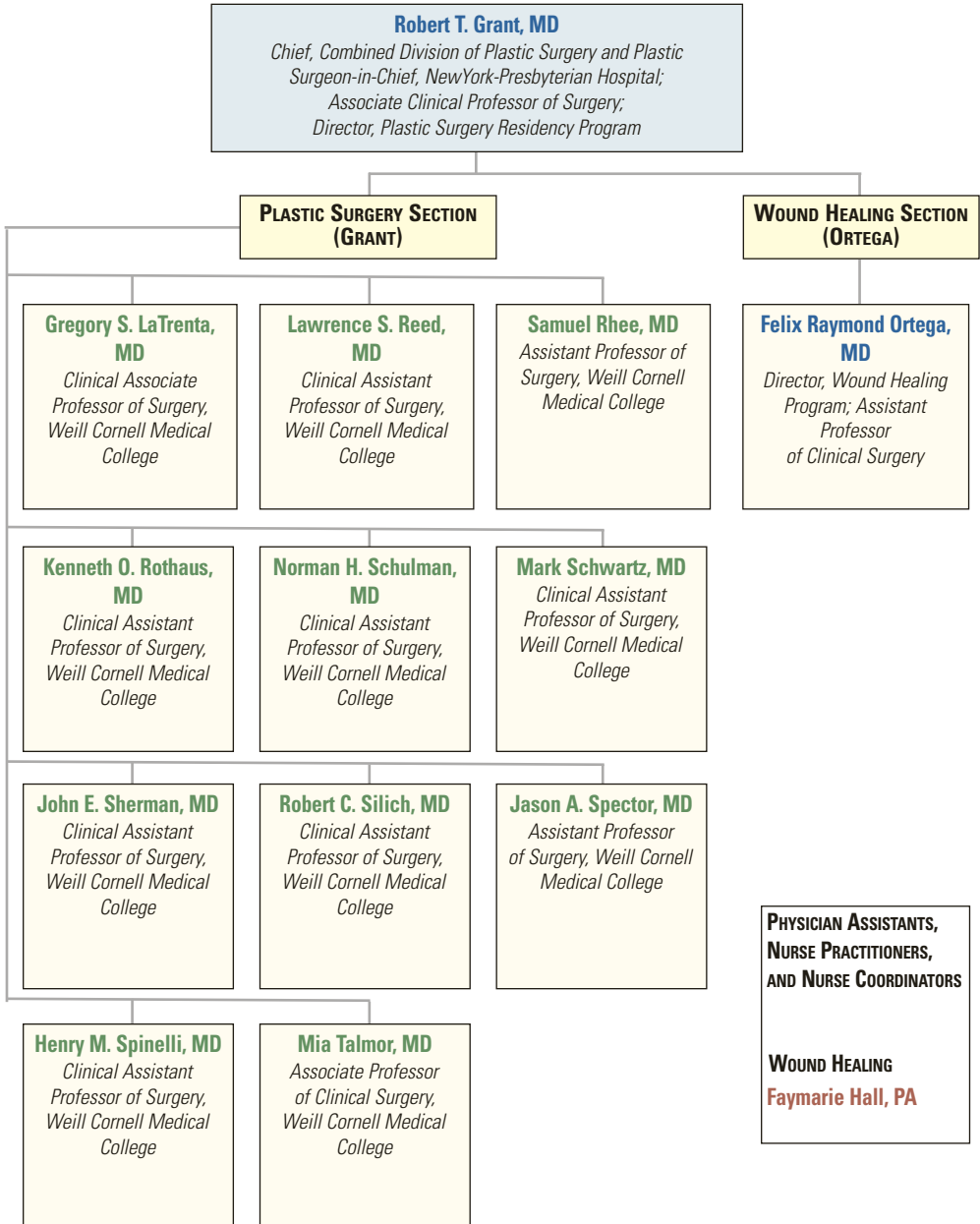
- Department of Surgery Faculty
- Affiliated Columbia & Cornell Faculty
- Directors
- PAs, NPs, and Nurse Coordinators
- Coordinators, Administrators, Managers, and Specialists

Robert T. Grant, MD
Chief, Combined Divisions of Plastic Surgery, and Plastic Surgeon-in-Chief, NewYork-Presbyterian Hospital; Associate Clinical Professor of Surgery; Director, Plastic Surgery Residency Program

PLASTIC SURGERY SECTION (GRANT)



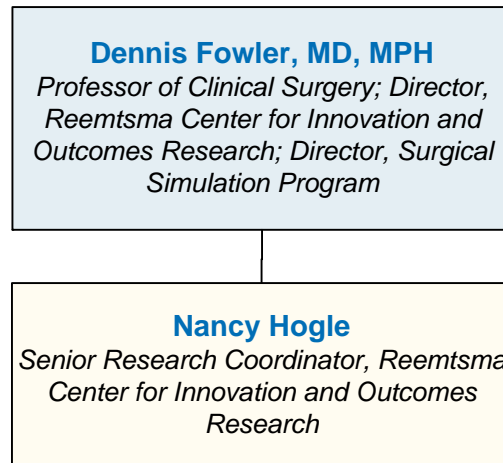
PLASTIC SURGERY



Division Administrator: **Charise Acevedo, 212.305.3103**
Wound Healing Section Administrator: **212.932.4325**

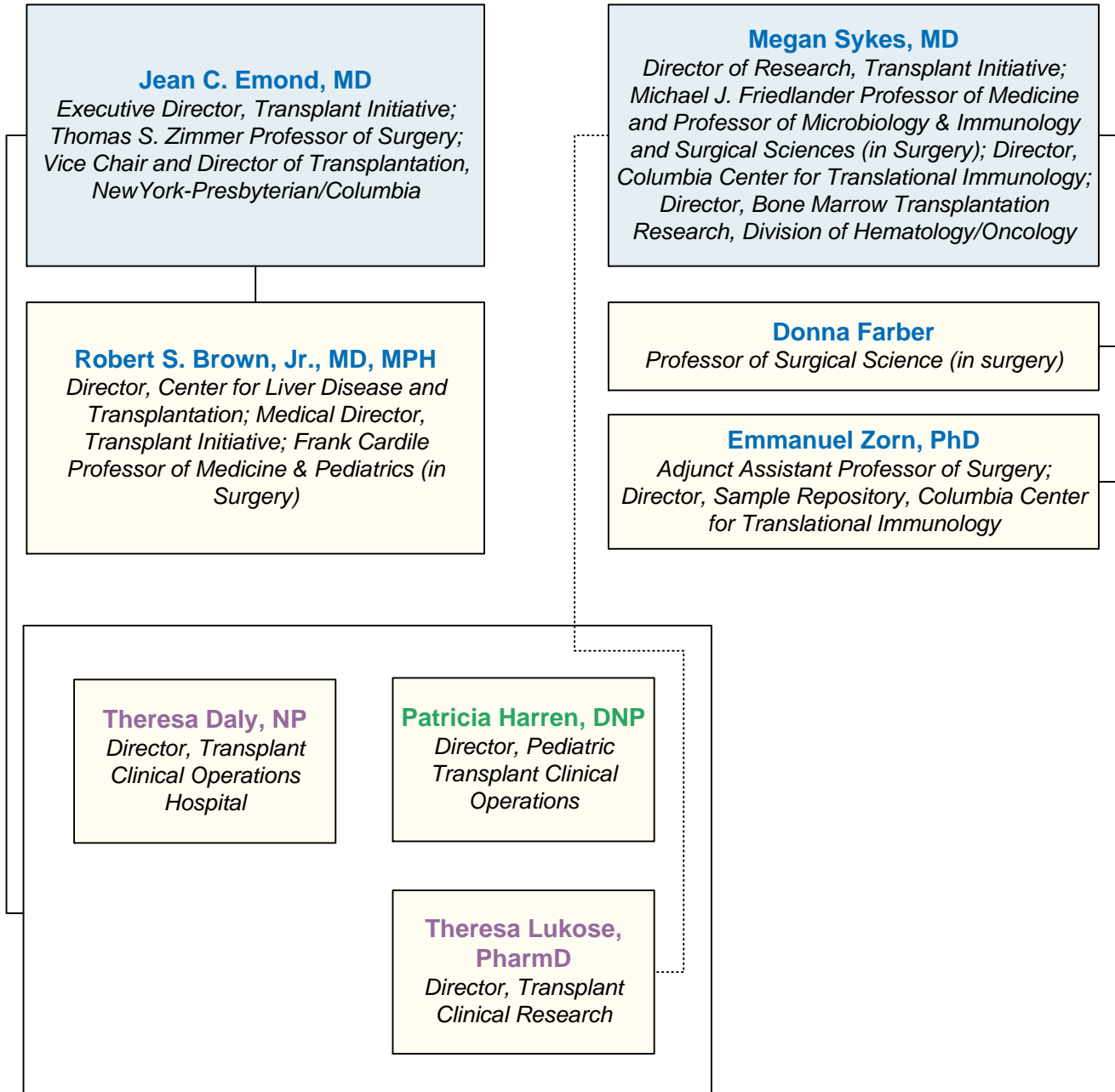
REEMTSMA CENTER FOR INNOVATION AND OUTCOMES RESEARCH (RCIOR)

- Department of Surgery Faculty
- Affiliated Columbia & Cornell Faculty
- Directors
- PAs, NPs, and Nurse Coordinators
- Coordinators, Administrators, Managers, and Specialists



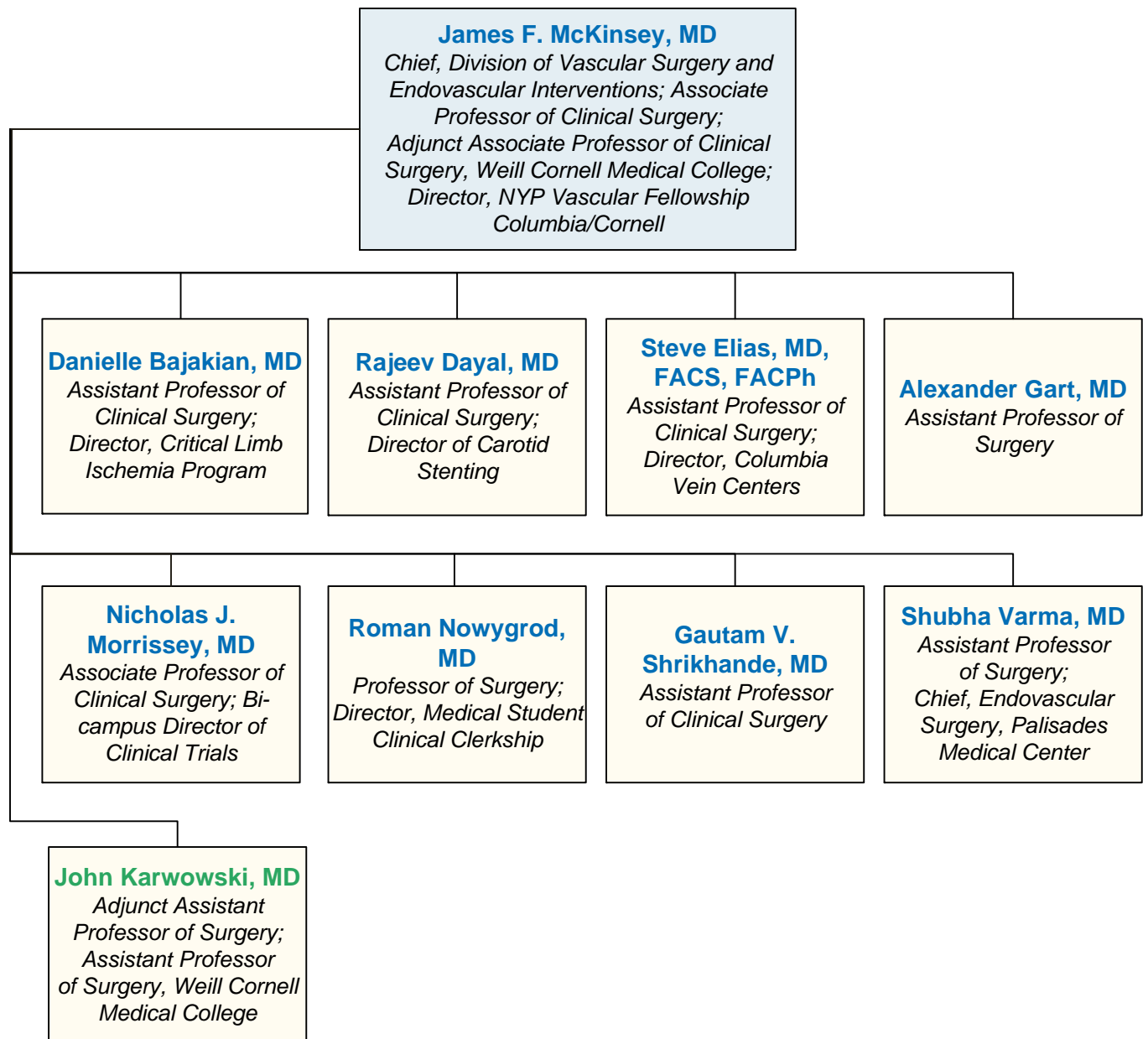
TRANSPLANT INITIATIVE

- Department of Surgery Faculty
- Affiliated Columbia & Cornell Faculty
- Directors
- PAs, NPs, and Nurse Coordinators
- Coordinators, Administrators, Managers, and Specialists



VASCULAR SURGERY AND ENDOVASCULAR INTERVENTIONS

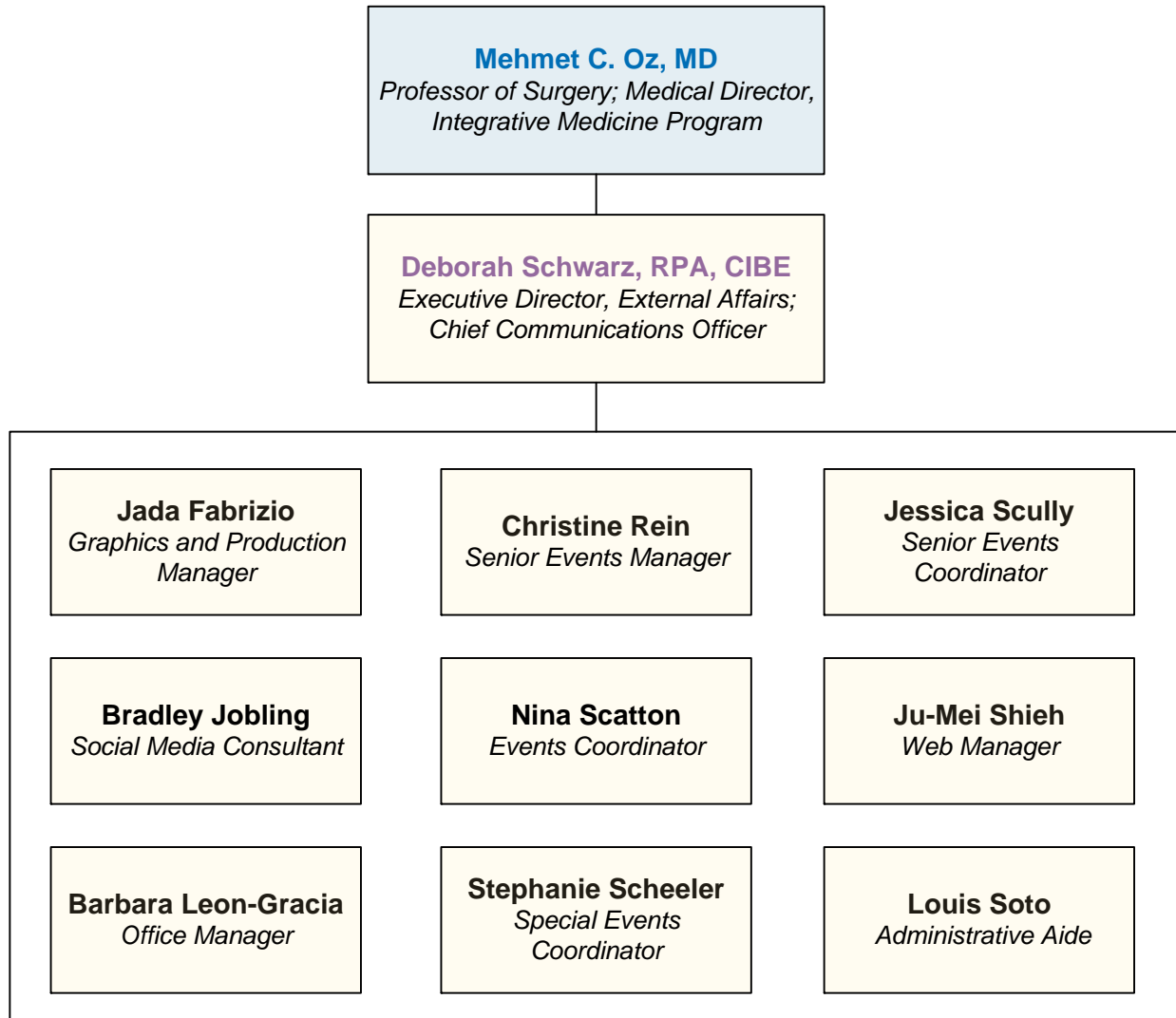
- Department of Surgery Faculty
- Affiliated Columbia & Cornell Faculty
- Directors
- PAs, NPs, and Nurse Coordinators
- Coordinators, Administrators, Managers, and Specialists



Office Manager: **Katherine Axente, 212.305.1028**
 Administrative Assistant: **Charlette Gomez, 212.342.3255**
 Referrals: **800.227.2762**

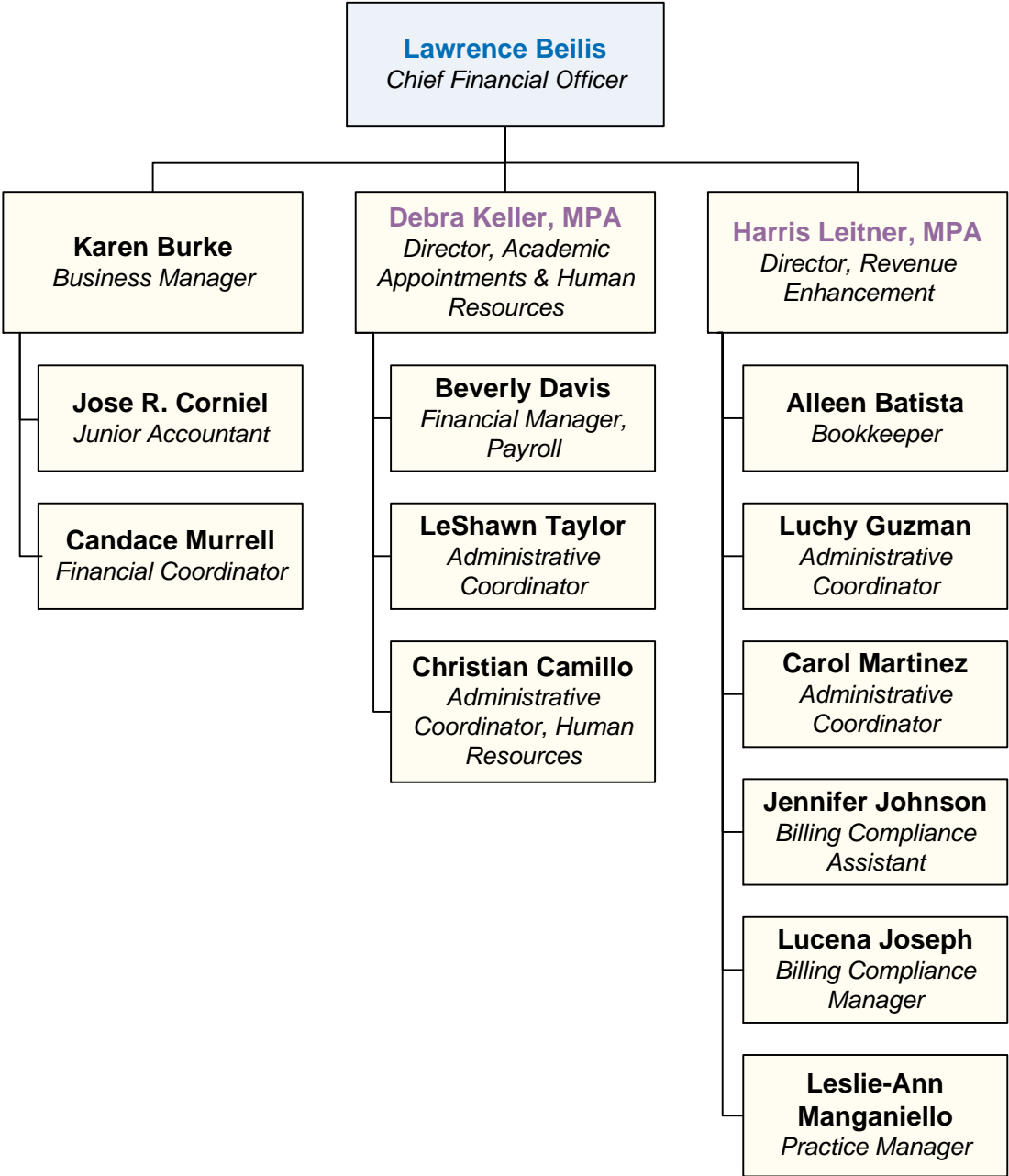
OFFICE OF EXTERNAL AFFAIRS

- Department of Surgery Faculty
- Affiliated Columbia & Cornell Faculty
- Directors
- PAs, NPs, and Nurse Coordinators
- Coordinators, Administrators, Managers, and Specialists



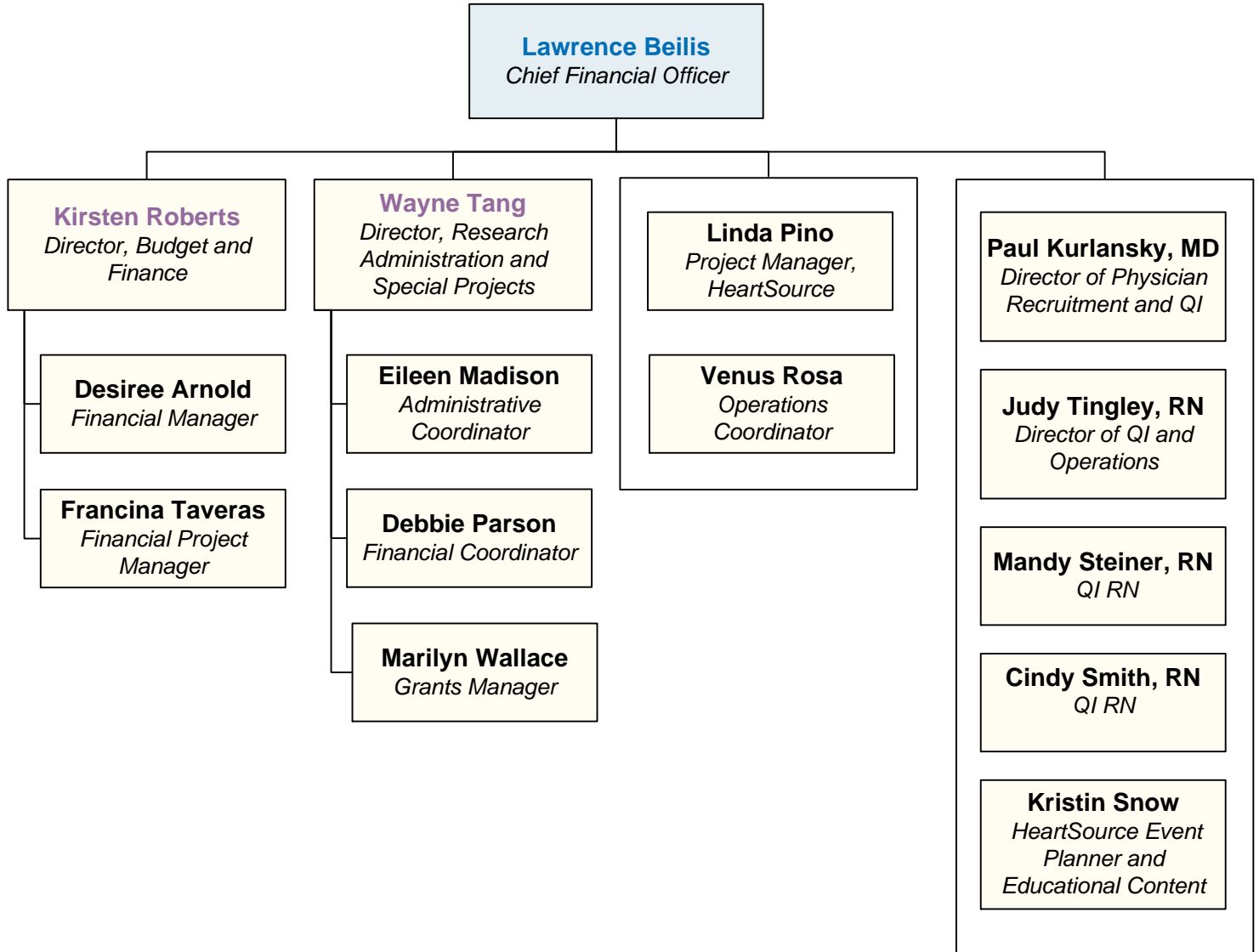
FINANCE OFFICE

- Department of Surgery Faculty
- Affiliated Columbia & Cornell Faculty
- Directors
- PAs, NPs, and Nurse Coordinators
- Coordinators, Administrators, Managers, and Specialists



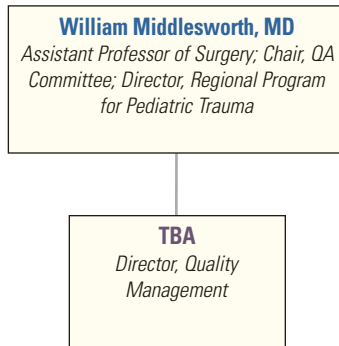
FINANCE OFFICE

- Department of Surgery Faculty
- Affiliated Columbia & Cornell Faculty
- Directors
- PAs, NPs, and Nurse Coordinators
- Coordinators, Administrators, Managers, and Specialists



QUALITY MANAGEMENT

- Department of Surgery Faculty
- Affiliated Columbia & Cornell Faculty
- Directors
- PAs, NPs, and Nurse Coordinators
- Coordinators, Administrators, Managers, and Specialists



RESEARCH & INFORMATION SYSTEMS

- Department of Surgery Faculty
- Affiliated Columbia & Cornell Faculty
- Directors
- PAs, NPs, and Nurse Coordinators
- Coordinators, Administrators, Managers, and Specialists

