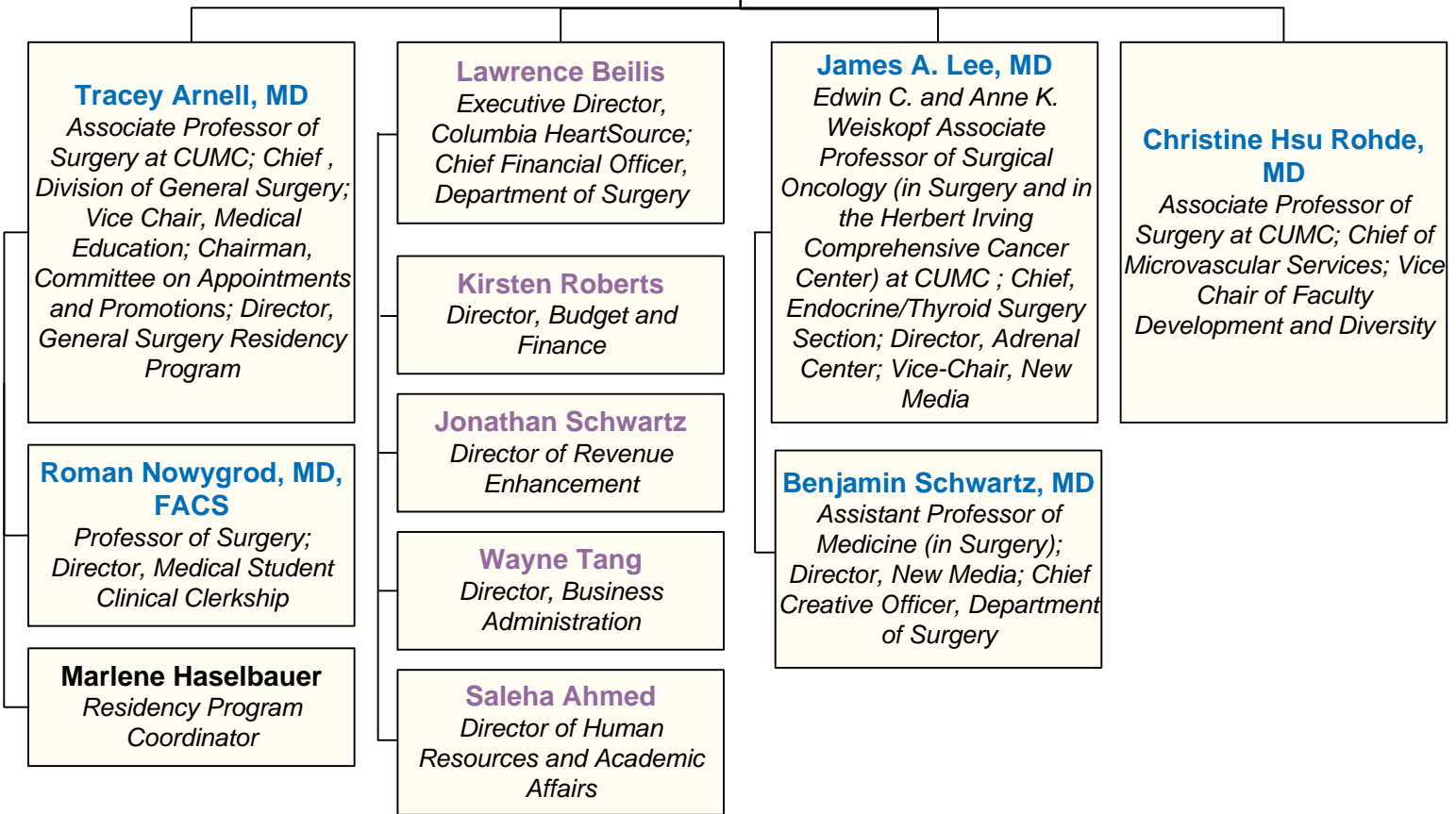


DEPARTMENT OF SURGERY LEADERSHIP

- Department of Surgery Faculty
- Affiliated Columbia & Cornell Faculty
- Directors
- PAs, NPs, and Nurse Coordinators
- Coordinators, Administrators, Managers, and Specialists

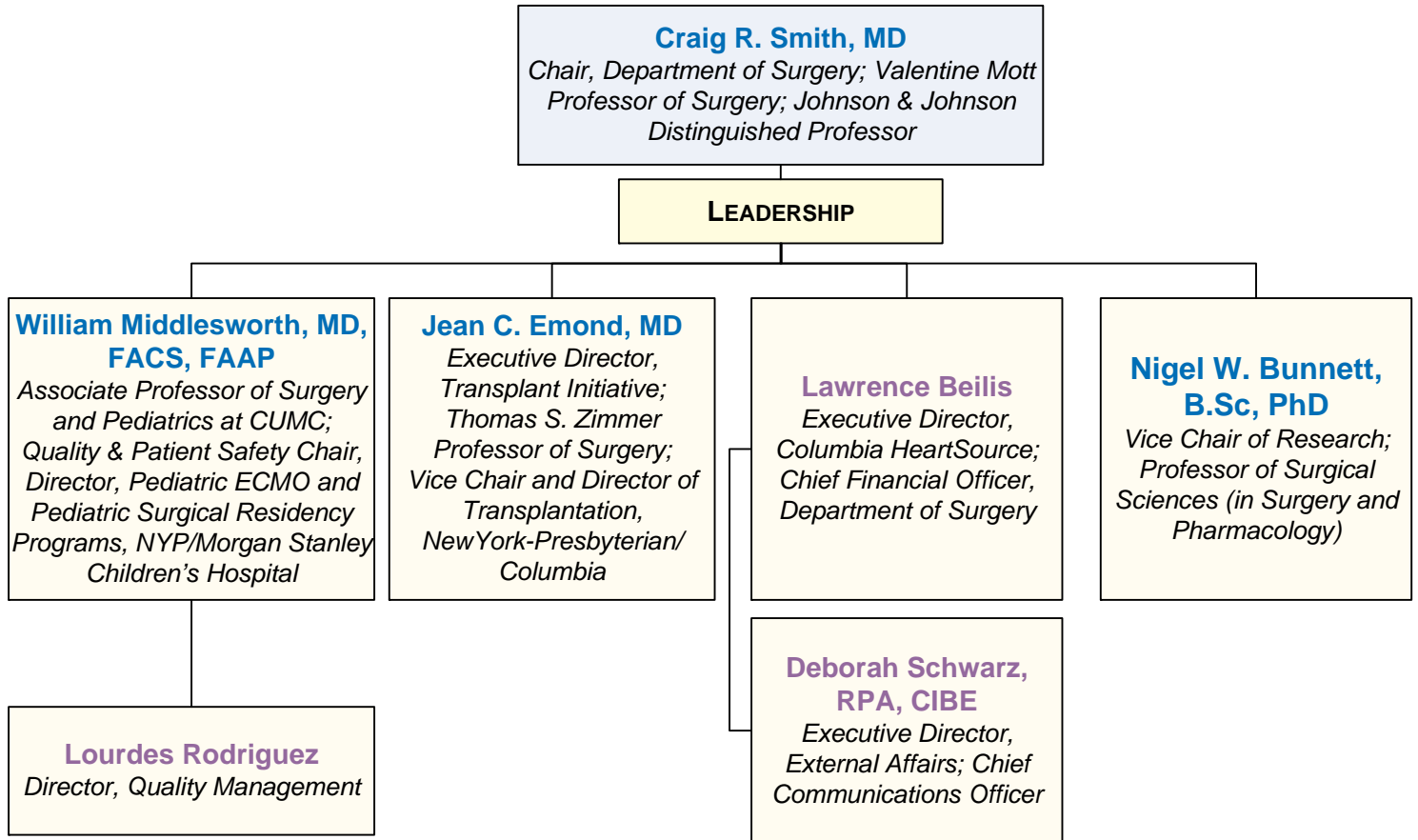
Craig R. Smith, MD
 Chair, Department of Surgery; Valentine Mott
 Professor of Surgery; Johnson & Johnson
 Distinguished Professor

LEADERSHIP



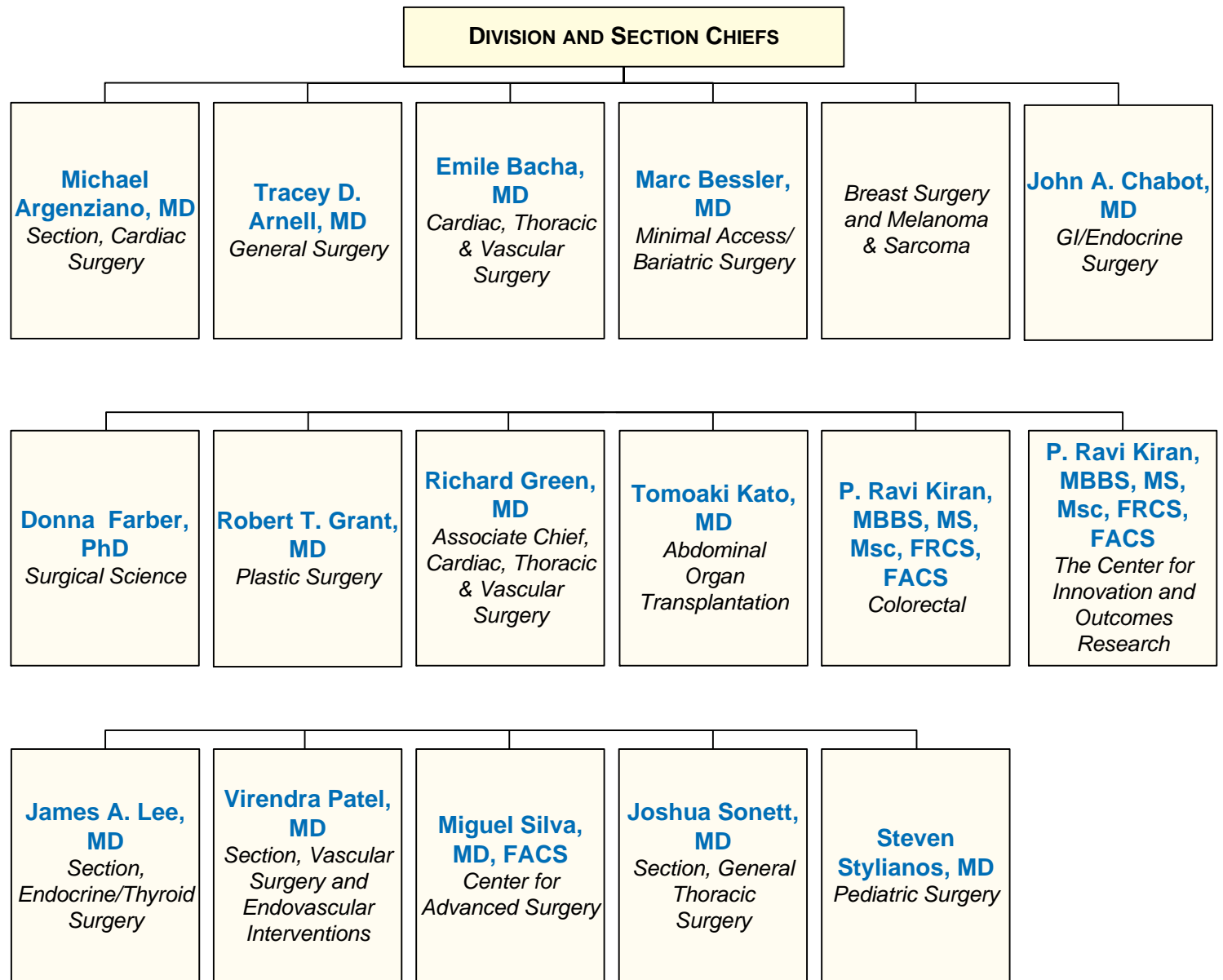
DEPARTMENT OF SURGERY LEADERSHIP

- Department of Surgery Faculty
- Affiliated Columbia & Cornell Faculty
- Directors
- PAs, NPs, and Nurse Coordinators
- Coordinators, Administrators, Managers, and Specialists



DEPARTMENT OF SURGERY LEADERSHIP

- Department of Surgery Faculty
- Affiliated Columbia & Cornell Faculty
- Directors
- PAs, NPs, and Nurse Coordinators
- Coordinators, Administrators, Managers, and Specialists



ABDOMINAL ORGAN TRANSPLANTATION

Jean C. Emond, MD
 Vice Chair & Chief of Transplantation;
 Thomas S. Zimmer Professor of Surgery

Tomoaki Kato, MD
 Chief, Division of Abdominal Organ
 Transplantation; Edwin C. & Anne K.
 Weiskopf Professor of Surgical Oncology

Patricia A. Harren, DNP
 Director of Clinical Operations; Assistant
 Professor of Nursing

LIVER ADULT MEDICAL TEAM (DOVE)

Lorna M. Dove, MD, MPH
 Chief, Division of Clinical
 Hepatology; Professor of
 Medicine (in Surgery) at CUMC

Alyson N. Fox, MD, MSCE
 Medical Director, Living Donor
 Liver Transplantation; Assistant
 Professor of Medicine

Paul J. Gaglio, MD
 Director, Hepatology Outreach;
 Professor of Medicine (in
 Surgery) at CUMC

Silvia Hafliger, MD
 Assistant Clinical Professor of
 Psychiatry

Elizabeth Verna, MD, MS
 Medical Director, Clinical
 Research; Assistant Professor
 of Medicine

Julia Wattacheril, MD, MPH
 Assistant Professor of Medicine

**Robert S. Brown, Jr., MD,
MPH**
 Clinical Chief, Division of
 Gastroenterology and Hepatology,
 Weill Cornell Medical College

Arun Jesudian, MD
 Assistant Professor of Medicine,
 Weill Cornell Medical College

Catherine Lucero, MD
 Assistant Professor of Medicine,
 Weill Cornell Medical College

Brett Fortune, MD
 Assistant Professor of Medicine,
 Weill Cornell Medical College

LIVER SURGICAL TEAM (KATO)

Tomoaki Kato, MD
 Chief, Division of Abdominal Organ
 Transplantation; Edwin C. & Anne
 K. Weiskopf Professor of Surgical
 Oncology

Jean C. Emond, MD
 Vice Chair & Chief of
 Transplantation; Thomas S. Zimmer
 Professor of Surgery

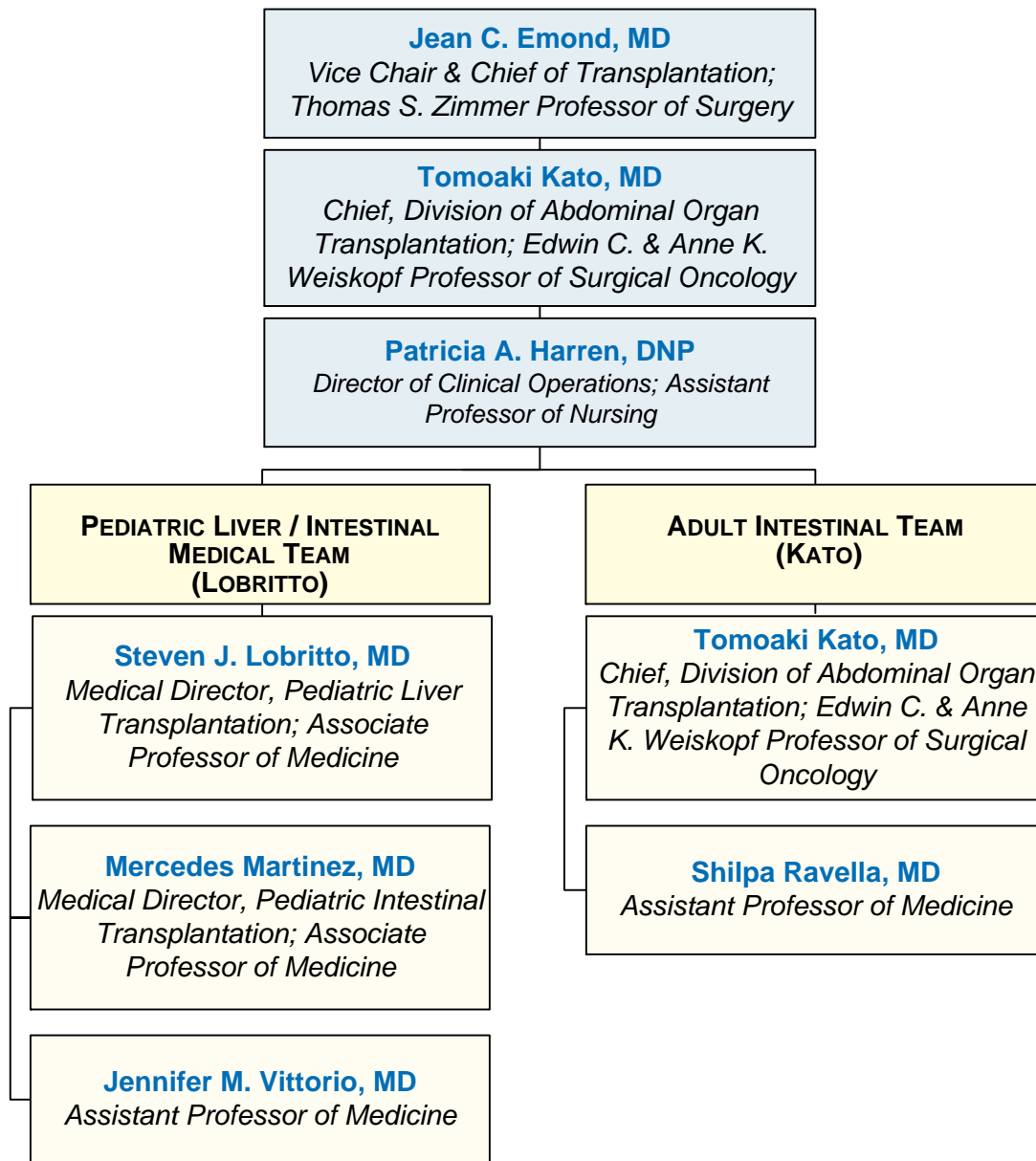
James V. Guarrera, MD
 Surgical Director, Adult Liver
 Transplantation; Associate
 Professor of Surgery

Adam D. Griesemer, MD
 Assistant Professor of Surgery

Benjamin Samstein, MD
 Chief, Division of Liver Transplantation
 & Hepatobiliary Surgery, Weill Cornell
 Medical College

Karim Halazun, MD
 Assistant Professor of Surgery, Weill
 Cornell Medical College

ABDOMINAL ORGAN TRANSPLANTATION



PHYSICIAN ASSISTANTS, NURSE PRACTITIONERS, AND NURSE COORDINATORS

Kristin Abernathy, RN
Lorin Amanda Albrecht PA-C
Janica Barnett, NP
Candace Belmore, RN
Sheila Bradley, NP
Damaris Carriero, NP
Judith Gang, NP
Nicole Golden, NP
Stella Goudie, RN
Patricia A. Harren, DNP

Nicole Kelly, NP
Lauren Kempf, DNP
Calvin Lee, NP
Lisa Lisanti, PA
Monica Nelson, RN
N. Kyla Osborne, NP
Anna Rundle, NP
Veronica Roye, RN
Karin Shears, NP
Monica Velasco, NP

ABDOMINAL ORGAN TRANSPLANTATION

Jean C. Emond, MD
*Vice Chair & Chief of Transplantation;
 Thomas S. Zimmer Professor of Surgery*

Tomoaki Kato, MD
*Chief, Division of Abdominal Organ
 Transplantation; Edwin C. & Anne K.
 Weiskopf Professor of Surgical Oncology*

**KIDNEY/PANCREAS
 ADULT MEDICAL TEAM
 (COHEN)**

David J. Cohen, MD
*Medical Director, Renal Transplantation;
 Professor of Medicine*

Jae H. Chang, MD
Assistant Professor of Medicine

R. John Crew, MD
Assistant Professor of Medicine

Geoffrey K. Dube, MD
Assistant Professor of Medicine

Sumit Mohan, MD
Assistant Professor of Medicine

Heather K. Morris, MD
Assistant Professor of Medicine

**KIDNEY/PANCREAS
 SURGICAL TEAM
 (RATNER)**

Lloyd E. Ratner, MD
*Surgical Director, Renal Transplantation;
 Professor of Surgery*

James V. Guarrera, MD
*Surgical Director, Adult Liver
 Transplantation; Associate Professor of
 Surgery*

Mark A. Hardy, MD
*Auchincloss Professor of Surgery;
 Director Emeritus & Founder, Renal and
 Islet Transplantation*

Kasi McCune, MD
Assistant Professor of Surgery

Roman Nowygrod, MD
*Professor of Surgery; Director, Medical
 Student Clinical Clerkship*

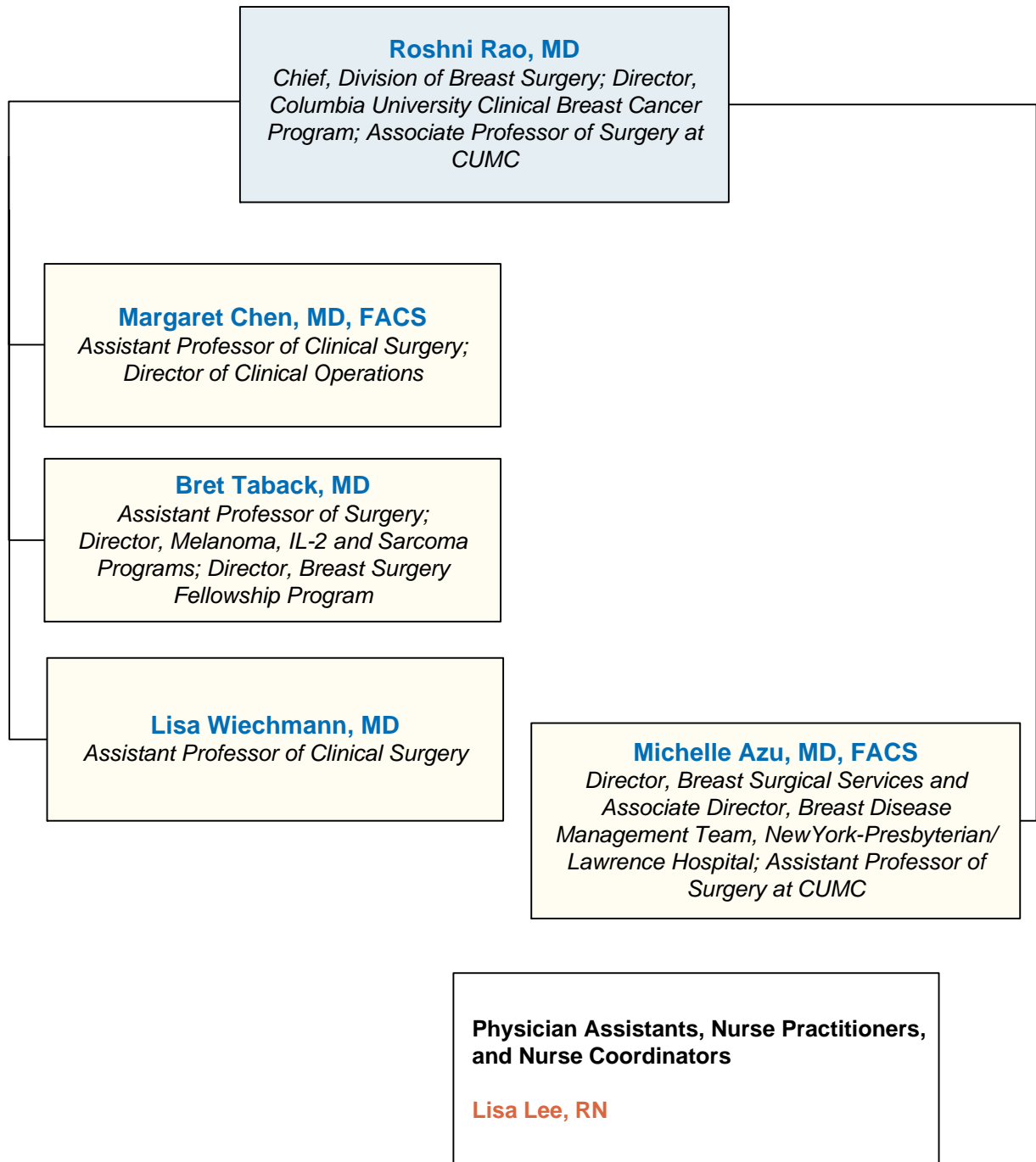
Pedro Rodrigo Sandoval, MD
Assistant Professor of Surgery

PHYSICIAN ASSISTANTS, NURSE PRACTITIONERS, AND NURSE COORDINATORS

Jessica Brown, RN	Maxine Morris, RN
Maureen Carroll, RN	Kimberly Nelson, PA
Leigh-Anne Dale, PA	Oluremi Williams, NP
Jillian Daleo, PA	Shefali Patel, NP
Moya Gallagher, RN	Brian Runge, RN
Erika Fox Green, PA	Mary Jane Samuels, RN
Agnes Kabiri, RN	Karin Sobeck, RN
Joan Kelly, RN	Karen Stugensky, PA
Jennifer Lione, RN	Ibadete Sulejmani, PA
	Jennifer Wexler, RN

BREAST SURGERY AND MELANOMA & SARCOMA

- Department of Surgery Faculty
- Affiliated Columbia & Cornell Faculty
- Directors
- PAs, NPs, and Nurse Coordinators
- Coordinators, Administrators, Managers, and Specialists



CARDIAC SURGERY

- Department of Surgery Faculty
- Affiliated Columbia & Cornell Faculty
- Directors
- PAs, NPs, and Nurse Coordinators
- Coordinators, Administrators, Managers, and Specialists

Emile A. Bacha, MD
*Chief, Division of Cardiac, Thoracic & Vascular Surgery;
 Calvin F. Barber Professor of Surgery; Director, Congenital
 and Pediatric Cardiac Surgery, NYP/Morgan Stanley
 Children's Hospital; Adjunct Professor of Surgery, Weill
 Cornell Medical College*

**ADULT CARDIAC
(ARGENZIANO)**

**PEDIATRIC CARDIAC
(BACHA)**

**HEARTSOURCE
(BEILIS)**

**Michael Argenziano,
MD, FACS**
*Chief, Section of Adult
 Cardiac Surgery; Professor
 of Surgery at CUMC;
 Director, Minimally Invasive
 Cardiac Surgery and
 Arrhythmia Surgery;
 Program Director,
 Cardiothoracic Residency
 Program*

Mehmet C. Oz, MD
*Professor of Surgery at
 CUMC*

Syed T. Raza, MD, FACS
*Director Cardiac Surgery
 Step-down Unit,
 Cardiothoracic Surgery*

Emile A. Bacha, MD
*Chief, Division of Cardiac,
 Thoracic & Vascular
 Surgery; Calvin F. Barber
 Professor of Surgery;
 Director, Congenital and
 Pediatric Cardiac Surgery,
 NYP/Morgan Stanley
 Children's Hospital; Adjunct
 Professor of Surgery, Weill
 Cornell Medical College*

Lawrence Beilis
Chief Financial Officer

**Vinayak Bapat, MBBS,
MS, DNB, FRCS**
*Assistant Professor of
 Surgery at CUMC; Director,
 Transcatheter Valve Therapy*

Craig R. Smith, MD
*Chair, Department of
 Surgery; Valentine Mott
 Professor of Surgery;
 Johnson & Johnson
 Distinguished Professor*

Paul J. Chai, MD
*Assistant Professor of
 Surgery at CUMC*

Susan J. Schnell
*Director of Operations,
 HeartSource*

Isaac George, MD
*Assistant Professor of
 Surgery at CUMC; Surgical
 Director, Transcatheter
 Cardiovascular Therapies
 Director, Hybrid Coronary
 Interventions*

Henry M. Spotnitz, MD
*George H. Humphreys, II
 Professor of Surgery; Vice
 Chair, Research &
 Information Systems*

David Kalfa, MD, PhD
*Assistant Professor of
 Surgery at CUMC*

Tanya Baskins, RN
 QI RN

**Yoshifumi Naka, MD,
PhD**
*Professor of Surgery;
 Director, Cardiac
 Transplantation; Director,
 Mechanical Circulatory
 Support Program*

**Hiroo Takayama, MD,
PhD**
*Associate Professor of
 Surgery at CUMC; Director
 of Cardiovascular Institute;
 Co-Director, Aortic Program;
 Co-Director, Marfan Clinic;
 Co-Director, HCM program,
 Division of Cardiac, Vascular
 & Thoracic Surgery, NYP/
 Columbia*

**Jan M. Quaegebeur, MD,
PhD**
*Morris & Rose Milstein
 Professor of Surgery;
 Director, Pediatric Cardiac
 Surgery, NewYork-
 Presbyterian*

Emily Guderian
*Manager, Cardiac
 Quality*

Cynthia Kiphuth
*Program Development
 Coordinator*

Paul Kurlansky, MD
*Director of Physician
 Recruitment and QI;
 Associate Director,
 Center for Innovations
 and Outcomes
 Research*

Kevin Lotsis
*Director of Business
 Development*

Samantha Nemeth
 Senior Analyst

Koji Takeda, MD, PhD
*Assistant Professor of
 Surgery at CUMC*

Cindy Smith, RN
 QI RN

CARDIAC SURGERY

- Department of Surgery Faculty
- Affiliated Columbia & Cornell Faculty
- Directors
- PAs, NPs, and Nurse Coordinators
- Coordinators, Administrators, Managers, and Specialists

PHYSICIAN ASSISTANTS, NURSE PRACTITIONERS, AND NURSE COORDINATORS

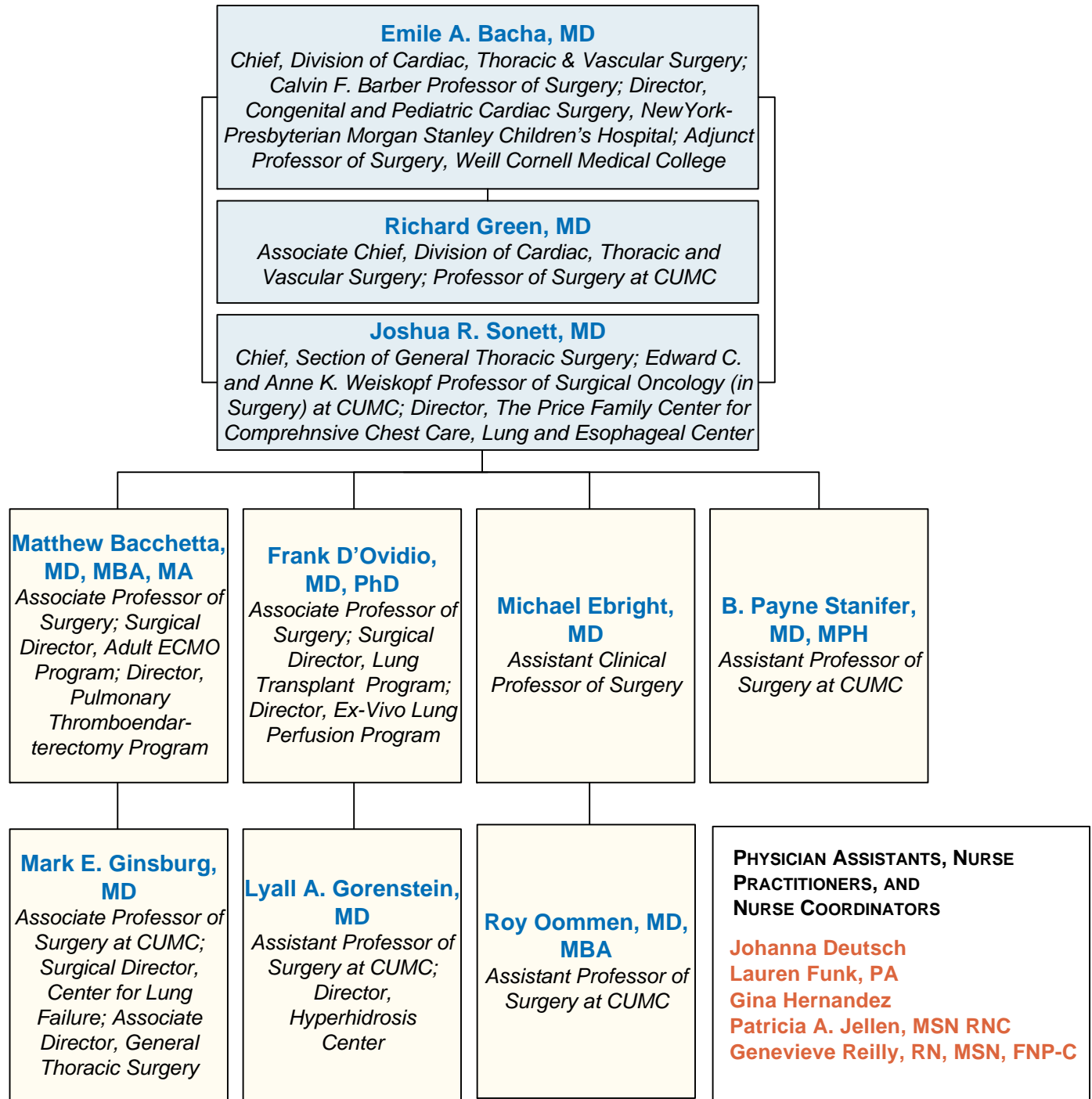
Laura Altman, PA
Rachel Ashbrook
Eric Beninghof, PA
Sarah Boss, PA
Katelyn Buckley
Ying Yu Chan, PA
Allison Chang
Autumn Chim, PA
Emily Clark, PA
Rozelle Corda, NP
Tom Cosola

Chris Coughlin
Brad Crerar, PA
Nicole Cruz, PA
Diane DeMartino, PA
Jimmy Doolittle, PA
Marybeth Duffy, NP
Devin Flanigan, PA
Jessica Fox, PA
George Gibbons, PA
Cara Jugant, PA
Jacquelyn Klein, PA
Christine Merle, NP

Jessica Panarella
Dana Reed, NP
Carolina Rezende, PA
Mindi Rodgers, PA
Alyssa Sarro, PA
Debbie Savarese, PA
Evelyn Smedberg, PA
Maryann Sous, PA
Kevin Swann, PA
Liz Wist, PA
Emmy Xhemali

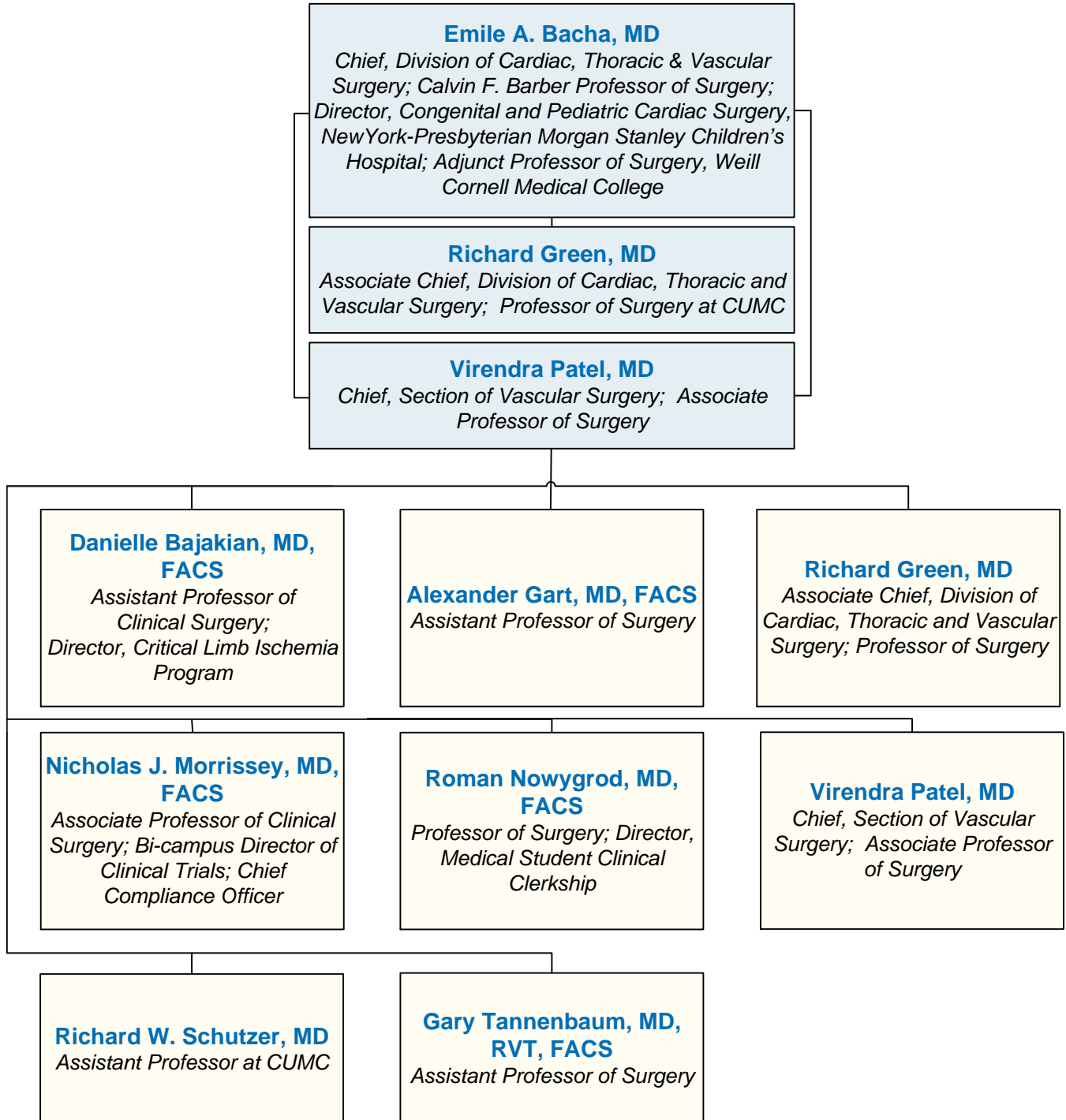
THORACIC SURGERY

- Department of Surgery Faculty
- Affiliated Columbia & Cornell Faculty
- Directors
- PAs, NPs, and Nurse Coordinators
- Coordinators, Administrators, Managers, and Specialists



VASCULAR SURGERY AND ENDOVASCULAR INTERVENTIONS

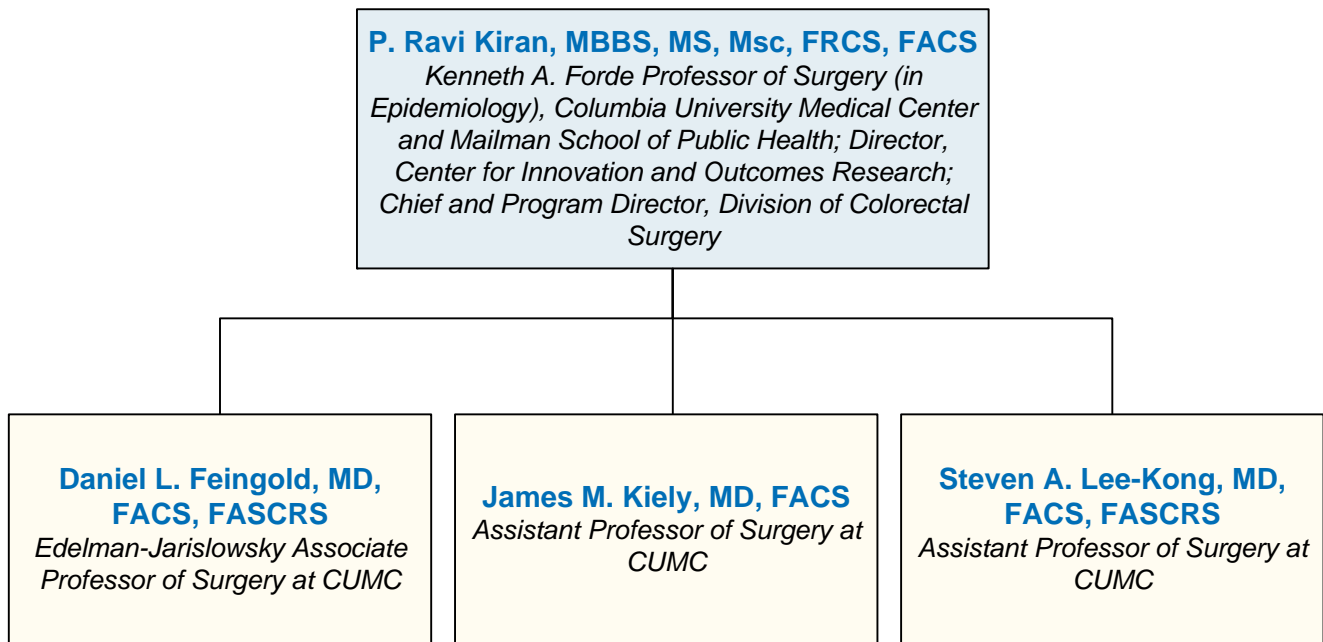
- Department of Surgery Faculty
- Affiliated Columbia & Cornell Faculty
- Directors
- PAs, NPs, and Nurse Coordinators
- Coordinators, Administrators, Managers, and Specialists



Division Administrator: **Katherine Ray, 212.305.1028**
Information: 212.342.3255
Referrals: 855.CUSURGE

COLORECTAL SURGERY

- Department of Surgery Faculty
- Affiliated Columbia & Cornell Faculty
- Directors
- PAs, NPs, and Nurse Coordinators
- Coordinators, Administrators, Managers, and Specialists

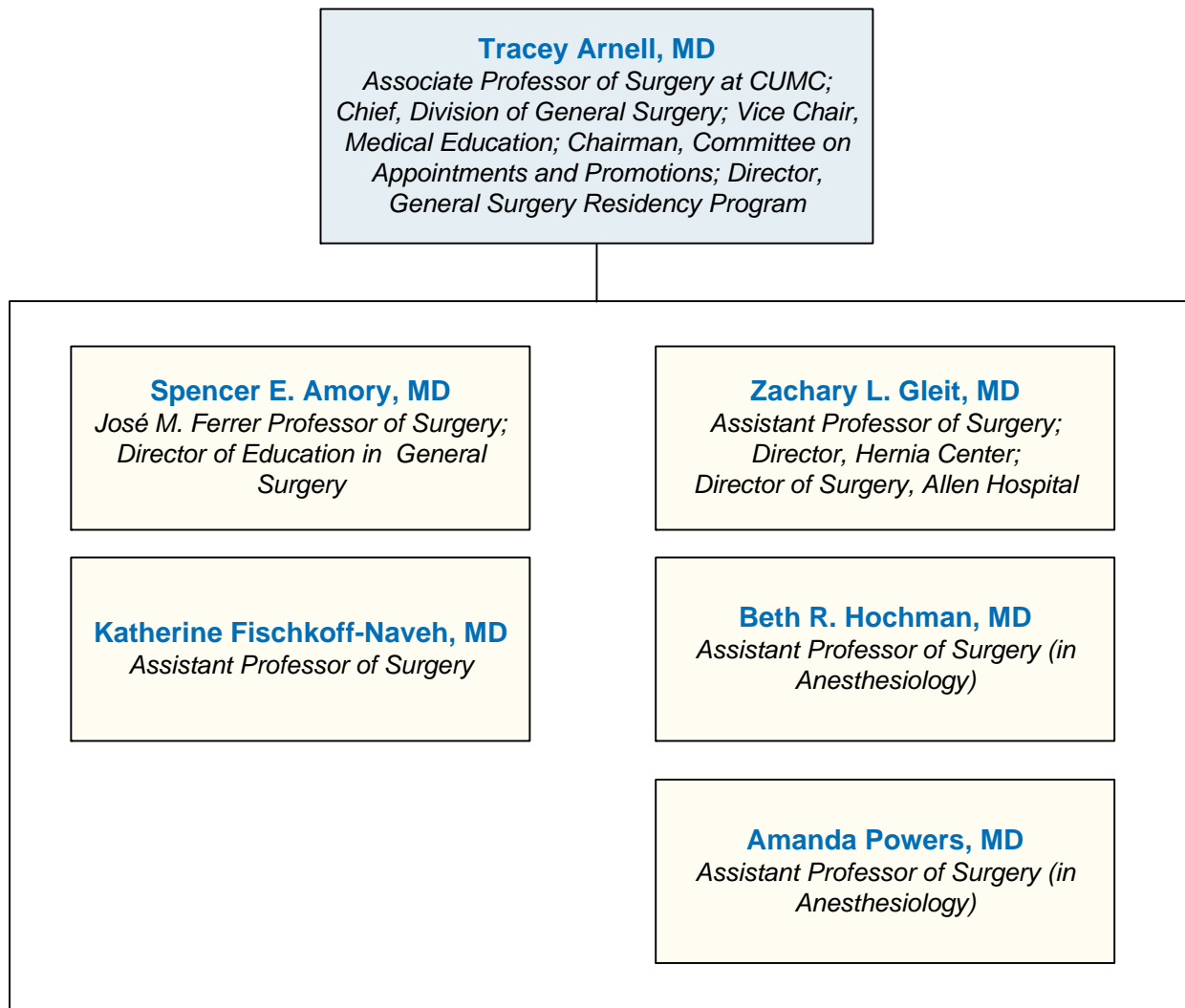


Physician Assistants, Nurse Practitioners, and Nurse Coordinators

Jeanne de Korte, NP
Vanessa Marra, RN, BSN, CWOCN, CMSRN
Jessica Rein, PA
Danielle Staub, MS, RD, CDN
Erin Testerman, RN, BSN, CWOCN
Sabrina Toledano, RD, CSO, CDN
Anna Varghese, NP

GENERAL SURGERY

- Department of Surgery Faculty
- Affiliated Columbia & Cornell Faculty
- Directors
- PAs, NPs, and Nurse Coordinators
- Coordinators, Administrators, Managers, and Specialists



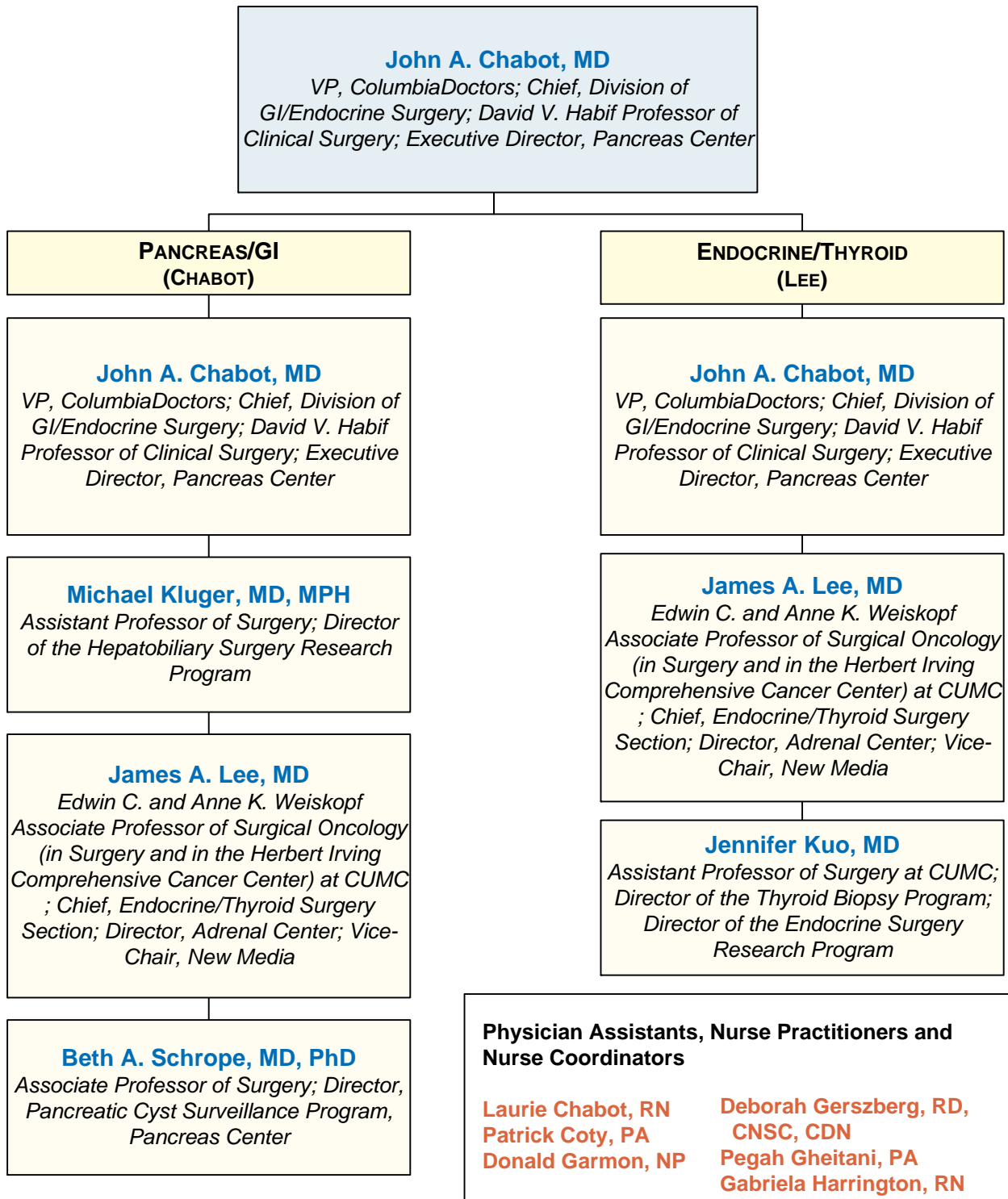
Physician Assistants, Nurse Practitioners, and Nurse Coordinators

Laura Alvarez, NP
Joanie Garcia, PA

Division Administrator: **Ana C. Rosario, 212.305.1976**
Referrals: **855.CUSURGE**

GI/ENDOCRINE SURGERY

- Department of Surgery Faculty
- Affiliated Columbia & Cornell Faculty
- Directors
- PAs, NPs, and Nurse Coordinators
- Coordinators, Administrators, Managers, and Specialists



Division Administrator: **Francine Castillo, 212.342.3677**
Referrals: **855.CUSURGE**

CENTER FOR ADVANCED SURGERY NEW YORK-PRESBYTERIAN/LAWRENCE HOSPITAL

- Department of Surgery Faculty
- Affiliated Columbia & Cornell Faculty
- Directors
- PAs, NPs, and Nurse Coordinators
- Coordinators, Administrators, Managers, and Specialists

Miguel Silva, MD, FACS
*Assistant Professor of Surgery at CUMC;
Director, Center for Advanced Surgery,
Lawrence Hospital*

John-Paul Salvatore Bellistri, MD
Assistant Professor of Surgery at CUMC

Allen Chefitz, MD
Assistant Professor of Surgery at CUMC

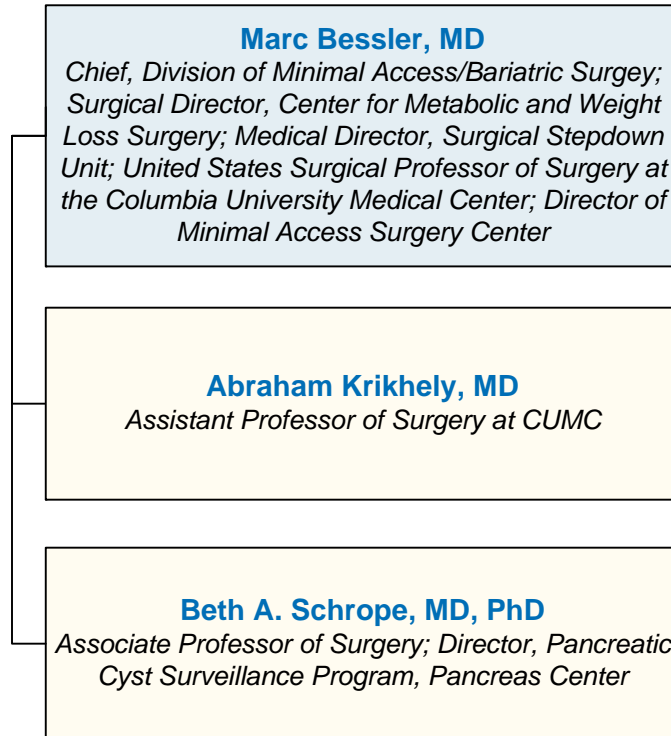
Arpan Goel, MD
Assistant Professor of Surgery at at CUMC

**Physician Assistants, Nurse Practitioners,
and Nurse Coordinators**

Mian Catalano, RDN
Kathryn Pisseri, NP

CENTER FOR METABOLIC AND WEIGHT LOSS SURGERY

- Department of Surgery Faculty
- Affiliated Columbia & Cornell Faculty
- Directors
- PAs, NPs, and Nurse Coordinators
- Coordinators, Administrators, Managers, and Specialists



**Physician Assistants, Nurse Practitioners,
and Nurse Coordinators**

Giovanni Dugay, ANP-C
Eileen Harvey-Coghlan, ANP-C
Nancy Restuccia, RD (dietician)

PEDIATRIC SURGERY

- Department of Surgery Faculty
- Affiliated Columbia & Cornell Faculty
- Directors
- PAs, NPs, and Nurse Coordinators
- Coordinators, Administrators, Managers, and Specialists

Steven Stylianos, MD

Surgeon-in-Chief of the Morgan Stanley Children's Hospital and Division Chief of Pediatric Surgery; Rudolph N Schullinger Professor of Pediatric Surgery at CUMC

Vincent Duron, MD

Assistant Professor of Surgery at CUMC

Angela Kadenhe-Chiweshe, MD

Assistant Professor of Surgery

William Middlesworth, MD, FACS, FAAP

Associate Professor of Surgery and Pediatrics at CUMC; Quality & Patient Safety Chair, Director, Pediatric ECMO and Pediatric Surgical Residency Programs, NYP/Morgan Stanley Children's Hospital

Steven S. Rothenberg, MD

Professor of Clinical Surgery

John N. Schullinger, MD

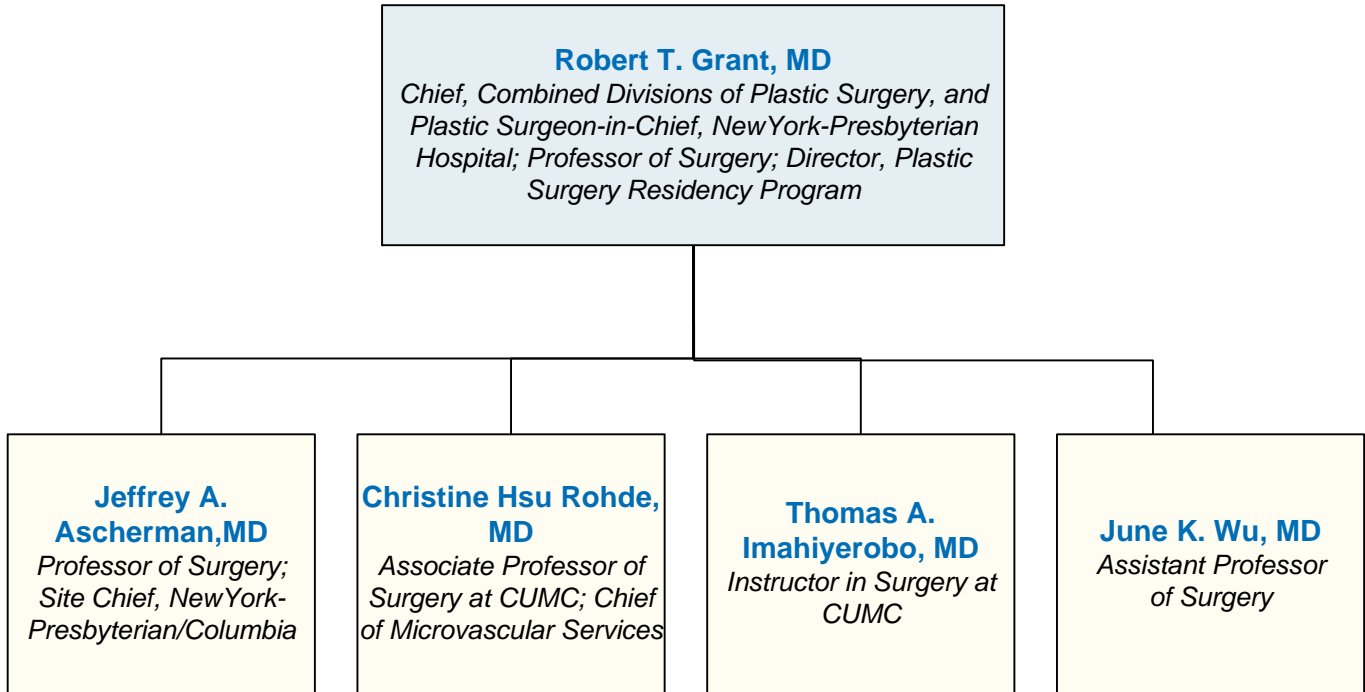
Professor Emeritus of Clinical Surgery

Jeffrey Zitsman, MD

Professor of Surgery at CUMC; Director, Center for Adolescent Bariatric Surgery, Morgan Stanley Children's Hospital

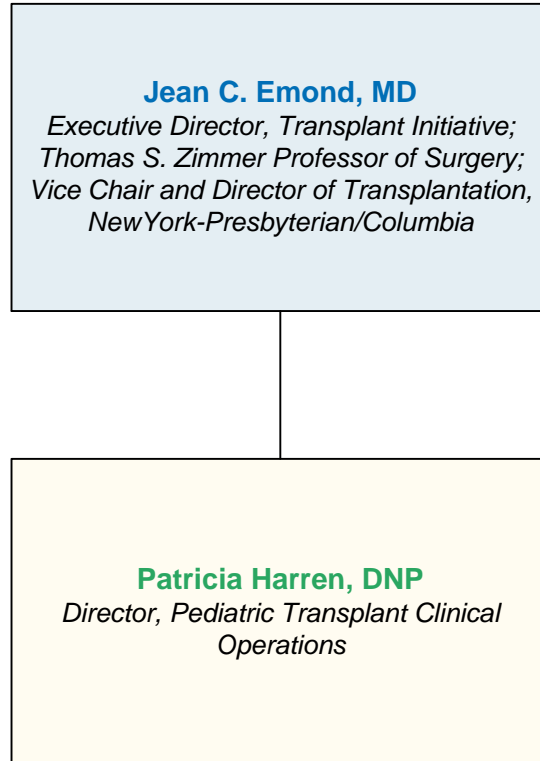
PLASTIC SURGERY

- Department of Surgery Faculty
- Affiliated Columbia & Cornell Faculty
- Directors
- PAs, NPs, and Nurse Coordinators
- Coordinators, Administrators, Managers, and Specialists



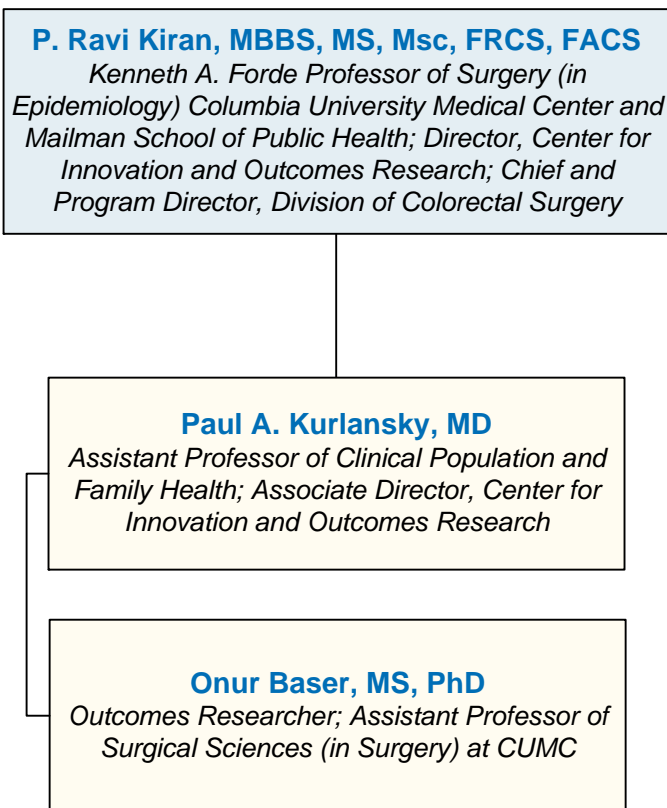
TRANSPLANT INITIATIVE

- Department of Surgery Faculty
- Affiliated Columbia & Cornell Faculty
- Directors
- PAs, NPs, and Nurse Coordinators
- Coordinators, Administrators, Managers, and Specialists



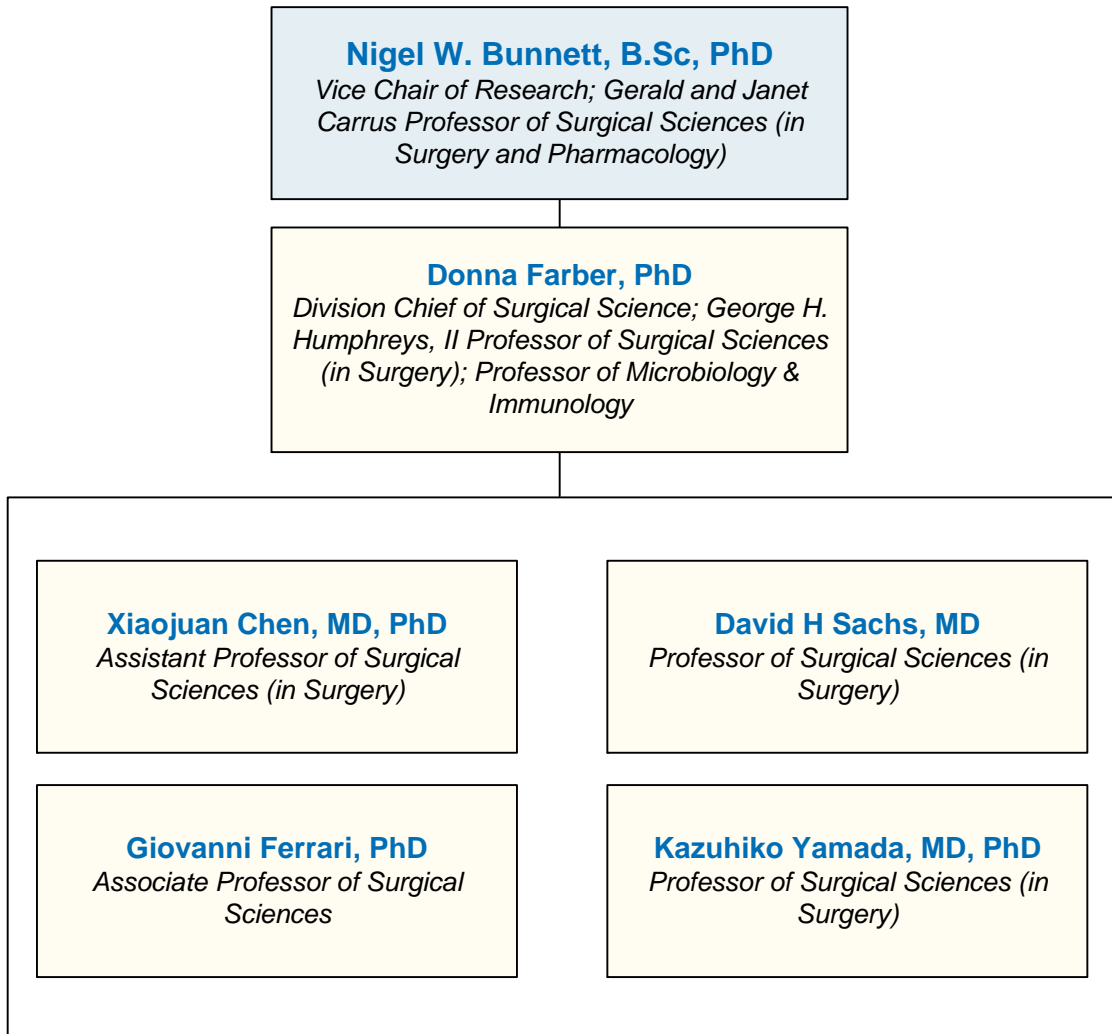
THE CENTER FOR INNOVATION AND OUTCOMES RESEARCH

- Department of Surgery Faculty
- Affiliated Columbia & Cornell Faculty
- Directors
- PAs, NPs, and Nurse Coordinators
- Coordinators, Administrators, Managers, and Specialists



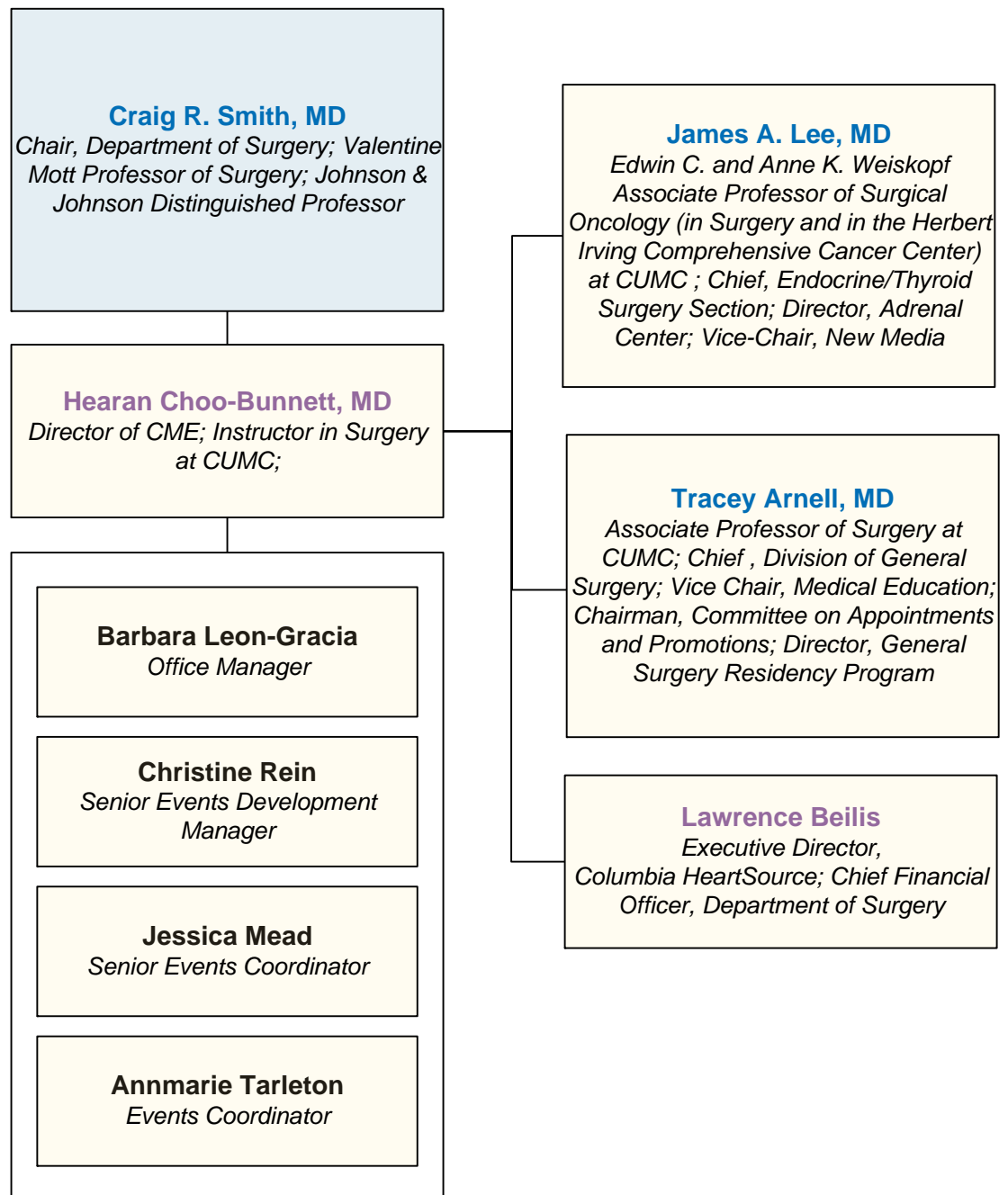
SURGICAL SCIENCE

- Department of Surgery Faculty
- Affiliated Columbia & Cornell Faculty
- Directors
- PAs, NPs, and Nurse Coordinators
- Coordinators, Administrators, Managers, and Specialists



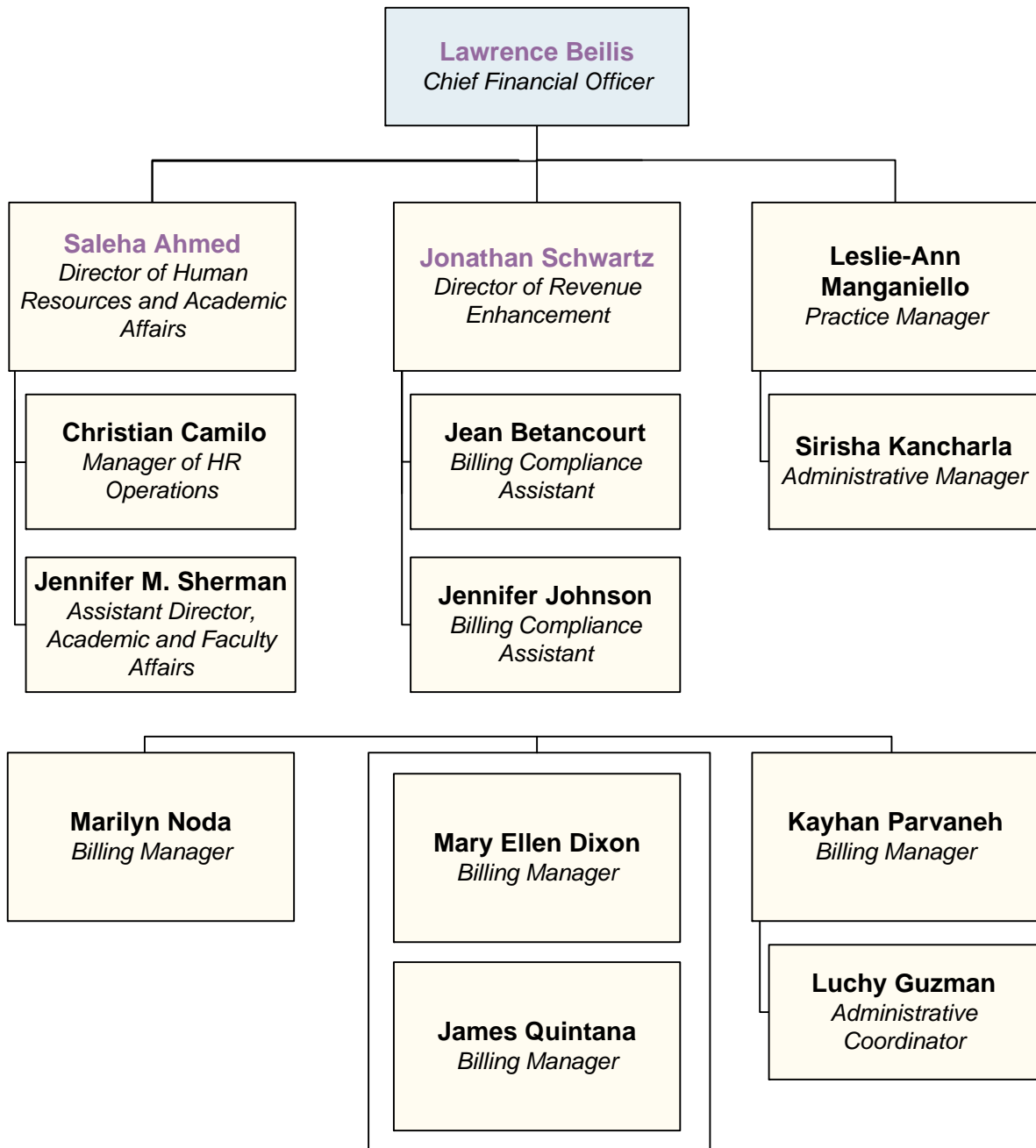
COLUMBIA SURGERY CME

- Department of Surgery Faculty
- Affiliated Columbia & Cornell Faculty
- Directors
- PAs, NPs, and Nurse Coordinators
- Coordinators, Administrators, Managers, and Specialists



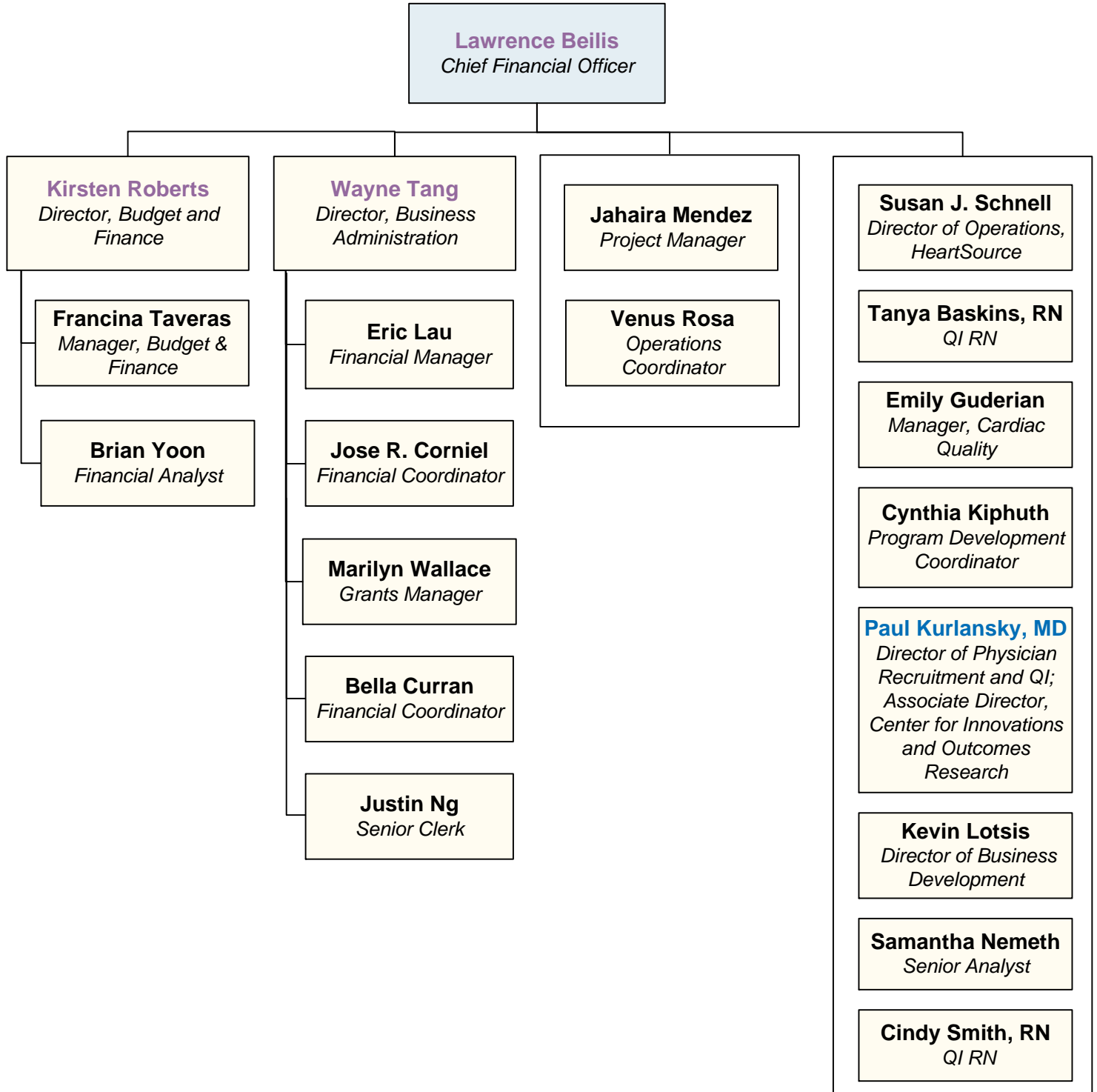
FINANCE OFFICE & OPERATIONS

- Department of Surgery Faculty
- Affiliated Columbia & Cornell Faculty
- Directors
- PAs, NPs, and Nurse Coordinators
- Coordinators, Administrators, Managers, and Specialists



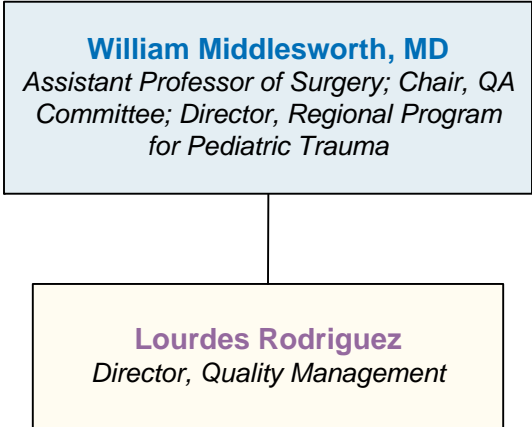
FINANCE OFFICE & OPERATIONS

- Department of Surgery Faculty
- Affiliated Columbia & Cornell Faculty
- Directors
- PAs, NPs, and Nurse Coordinators
- Coordinators, Administrators, Managers, and Specialists



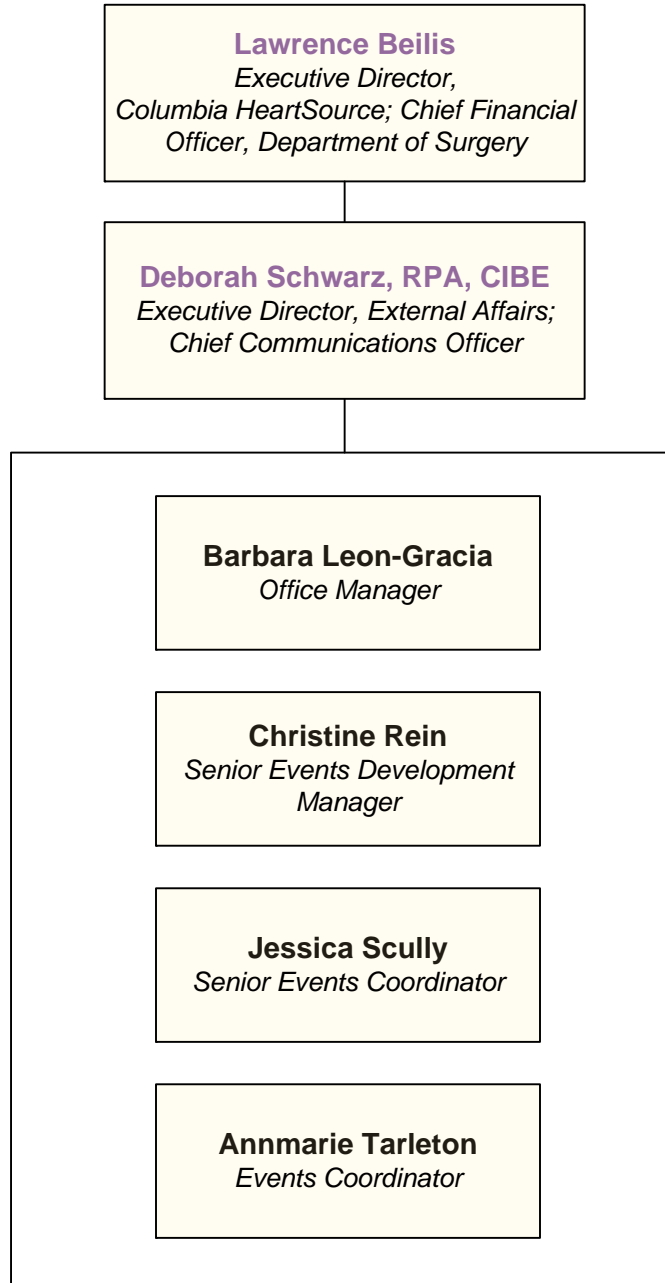
QUALITY MANAGEMENT

- Department of Surgery Faculty
- Affiliated Columbia & Cornell Faculty
- Directors
- PAs, NPs, and Nurse Coordinators
- Coordinators, Administrators, Managers, and Specialists



OFFICE OF EXTERNAL AFFAIRS

- Department of Surgery Faculty
- Affiliated Columbia & Cornell Faculty
- Directors
- PAs, NPs, and Nurse Coordinators
- Coordinators, Administrators, Managers, and Specialists

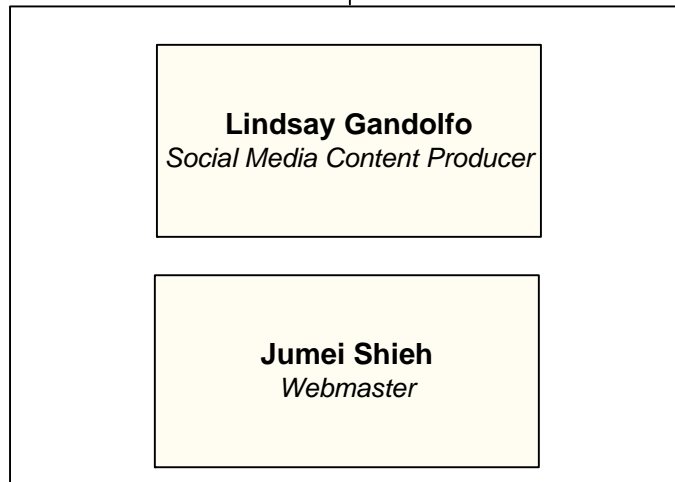


NEW MEDIA

- Department of Surgery Faculty
- Affiliated Columbia & Cornell Faculty
- Directors
- PAs, NPs, and Nurse Coordinators
- Coordinators, Administrators, Managers, and Specialists

James A. Lee, MD
Edwin C. and Anne K. Weiskopf Associate Professor of Surgical Oncology (in Surgery and in the Herbert Irving Comprehensive Cancer Center) at CUMC ; Chief, Endocrine/Thyroid Surgery Section; Director, Adrenal Center; Vice-Chair, New Media

Benjamin Schwartz, MD
Assistant Professor of Medicine (in Surgery); Director, New Media; Chief Creative Officer, Department of Surgery



RESEARCH & INFORMATION SYSTEMS

- Department of Surgery Faculty
- Affiliated Columbia & Cornell Faculty
- Directors
- PAs, NPs, and Nurse Coordinators
- Coordinators, Administrators, Managers, and Specialists

