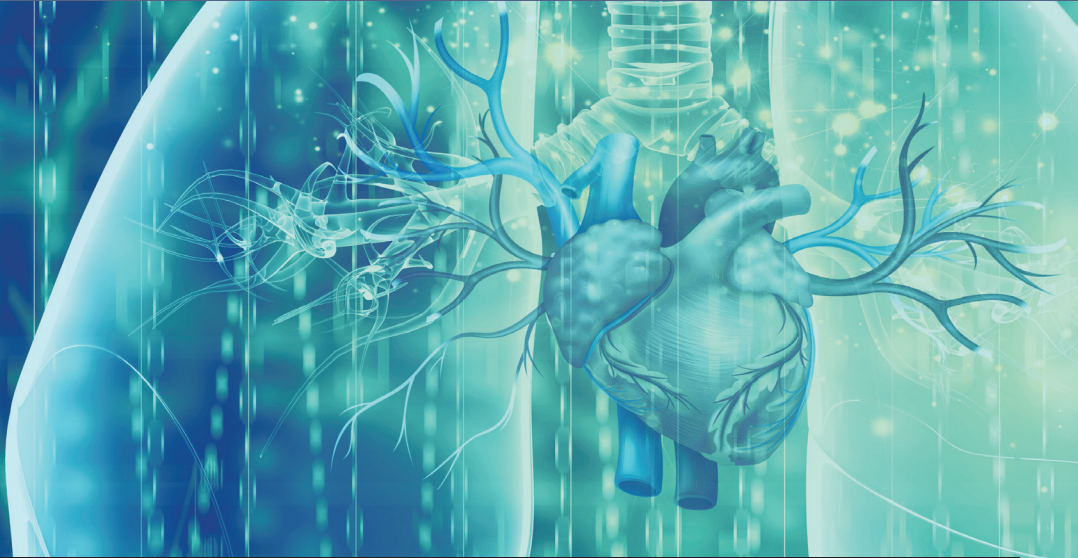




COLUMBIA UNIVERSITY

College of Physicians  
and Surgeons

NewYork-Presbyterian  
Columbia University Medical Center



*AT THE LEADING EDGE:* **New Frontiers in  
Pulmonary Hypertension and ECMO**

Thursday, January 8, 2015  
8:00am – 5:00pm

NewYork-Presbyterian/Columbia University Medical Center  
Vivian and Seymour Milstein Family Heart Center  
New York City

**Program Co-Directors:**  
Matthew Bacchetta, MD, MBA, MA  
Erika Berman Rosenzweig, MD  
Daniel Brodie, MD

## Overall Goals

---

This one day CME-accredited educational course will focus on challenging aspects in diagnosing and treating pulmonary hypertension and acute respiratory failure, with a specific focus on the use of extracorporeal membrane oxygenation (ECMO). Internationally recognized experts in the field will offer cutting edge advice relating to diagnosis and management. Major advances in the application of ECMO will be reviewed, as will the potential treatment options. Attendee participation and interaction will be facilitated through Q&A sessions.

## Learning Objectives

---

- Recognize which new treatment strategies are available to patients with specific types of pulmonary hypertension
- Identify when a patient meets criteria for referral to a specialized pulmonary hypertension center
- Discuss the criteria for patients that may be eligible for ECMO
- Define the process for when you refer patients for ECMO transport

## Target Audience

---

This activity is designed for critical care physicians, cardiologists, pediatric cardiologists, pediatric intensivists, pulmonologists, thoracic surgeons, ICU nurses, nurse practitioners, and other medical professionals involved in the management and treatment of patients with pulmonary hypertension and acute respiratory distress syndrome.

## Accreditation

---

The College of Physicians and Surgeons of Columbia University is accredited by the Accreditation Council for Continuing Medical Education to provide continuing medical education for physicians.

## AMA Credit Designation Statement

---

The College of Physicians and Surgeons designates this live activity for a maximum of 6.5 *AMA PRA Category 1 Credits*<sup>™</sup>. Physicians should claim only the credit commensurate with the extent of their participation in the activity.

Nurses and physician assistants are encouraged to check with their accrediting organization to ensure they accept *AMA PRA Category 1 Credits*<sup>™</sup>.

## Support

---

We expect support for this program through grants from pharmaceutical and medical device companies.

## Course Organizers

---

### Program Administrator

Deborah Schwarz, RPA, CIBE  
Executive Director and  
Chief Communications Officer  
Columbia University Medical Center  
Department of Surgery, External Affairs

### Program Coordinator

Jessica Scully  
Senior Events Coordinator  
Columbia University Medical Center  
Department of Surgery, External Affairs  
Telephone: 212-304-7817  
Fax: 212-304-7811  
E-mail: [jas2134@cumc.columbia.edu](mailto:jas2134@cumc.columbia.edu)

## Meeting Location

---

NewYork-Presbyterian/  
Columbia University Medical Center  
Vivian and Seymour Milstein Family  
Heart Center  
Myrna L. Daniels Auditorium  
173 Fort Washington Avenue, First Floor  
New York, NY 10032

### Registration

Outside of the  
Myrna L. Daniels Auditorium

### Didactics

Myrna L. Daniels Auditorium

### Meals & Vendor Exhibits

Riverview Terrace

## Travel & Hotel Information

---

### Local Area Hotels

For a listing of local area hotels, please visit [www.ColumbiaSurgeryCME.org](http://www.ColumbiaSurgeryCME.org) and select PHT/ECMO CME.

### Subway

Take the 1, A, C lines to 168th Street – Washington Heights/Broadway.

### Parking

Parking is available at the NewYork-Presbyterian/Columbia University Medical Center parking garage, located on the southwest corner of Fort Washington Avenue and West 165th Street. Parking fee is NOT included with registration.

Valet parking is available at the entrance of the Milstein Hospital Building located at 177 Fort Washington Avenue.

## Program Agenda

8:00am Registration, Breakfast & Vendor Exhibits

8:45am Welcoming Remarks

### SESSION I: PULMONARY HYPERTENSION IN 2015: GETTING UP TO SPEED

9:00am Where we've been: PAH as a universally fatal disease  
— *Lewis J. Rubin, MD*

9:15am Not all PH is PAH: Making the right diagnosis – the basic algorithm and beyond  
— *Jennifer Haythe, MD*

9:30am What's new in medical therapies for PAH?  
— *Erika Berman Rosenzweig, MD*

9:45am Associated PH & congenital heart disease: To close or not to close?  
— *Usha Krishnan, MD*

10:00am Questions & Answers

### SESSION II: PULMONARY HYPERTENSION: THE CUTTING EDGE

10:15am Surgical approaches to treatment of PE and PH (CTEPH/PTE, Embolectomy)  
— *Matthew Bacchetta, MD, MBA, MA*

10:30am Perioperative management of non-cardiac surgery in PH patients  
— *Joshua R. Sonett, MD, FACS*

10:45am When your PH patient gets admitted to the ICU: Averting PH crises and right heart failure  
— *Erika Berman Rosenzweig, MD*

11:00am ECMO for PH: Bridge to recovery  
— *Darryl Abrams, MD*

11:15am Questions & Answers

11:30am Break & Vendor Exhibits

### SESSION III: ECMO FOR ADULT RESPIRATORY FAILURE

11:45am Considering ECMO in my patient: Who and when?  
— *Cara L. Agerstrand, MD*

12:00pm ECMO for moderate ARDS: What is the evidence?  
— *Daniel Brodie, MD*

12:15pm ECMO for hypercapnic respiratory failure: Is it ready for prime time?  
— *Darryl Abrams, MD*

- 12:30pm Questions & Answers
- 12:45pm Lunch & Vendor Exhibits

#### **SESSION IV: ECMO IN ACTION**

- 1:45pm Bridge to lung transplantation  
— *Cara L. Agerstrand, MD*
- 2:00pm Surgical innovations  
— *Matthew Bacchetta, MD, MBA, MA*
- 2:15pm ECMO transport team  
— *Mauer Biscotti, MD*
- 2:30pm When is ambulating the ECMO patient an option?  
— *Daniel Brodie, MD*
- 2:45pm From the front lines  
My wife was on ECMO: What it's like on the other side  
— *Harry Silver*
- 3:00pm Questions & Answers

#### **SESSION V: WHAT THE FUTURE WILL LOOK LIKE IN PH & ECMO**

- 3:15pm Simulation: The key to success  
— *Marc L. Dickstein, MD*
- 3:30pm Personalized medicine in PH: How genetics may change the field  
— *Wendy K. Chung, MD, PhD*
- 3:45pm Artificial lung: The holy grail  
Mechanical solutions  
— *Keith E. Cook, PhD*  
Biologic solutions  
— *Gordana Vunjak-Novakovic, PhD*
- 4:15pm PROXY: Innovative approach to PH  
— *Matthew Bacchetta, MD, MBA, MA*
- 4:30pm Questions & Answers
- 4:45pm Closing Remarks

## Program Co-Directors

### Matthew Bacchetta, MD, MBA, MA

Assistant Professor of Surgery  
Division of Thoracic Surgery  
Columbia University College of Physicians and Surgeons  
Director, Adult Extracorporeal Membrane  
Oxygenation Program  
Director, Pulmonary Thromboendarterectomy Program  
Surgical Director, The Pulmonary Hypertension  
Comprehensive Care Center  
NewYork-Presbyterian/Columbia University Medical Center

### Erika Berman Rosenzweig, MD

Associate Professor of Pediatrics (in Medicine)  
Columbia University College of Physicians and Surgeons  
Medical Director, The Pulmonary Hypertension  
Comprehensive Care Center  
Associate Chief, Division of Pediatric Cardiology  
NewYork-Presbyterian/Columbia University Medical Center

### Daniel Brodie, MD

Associate Professor of Medicine  
Columbia University College of Physicians and Surgeons  
Director, Medical ICUs and Medical Critical Care Services  
Director, Medical ECMO Program  
Co-Director, Center for Acute Respiratory Failure  
NewYork-Presbyterian/Columbia University Medical Center

## Guest Faculty

### Keith E. Cook, PhD

Associate Professor of Biomedical Engineering  
Carnegie Mellon University

### Lewis J. Rubin, MD

Emeritus Professor of Medicine  
Emeritus Director of Pulmonary and Critical Care  
University of California, San Diego School of Medicine

## NewYork-Presbyterian Columbia University College of Physicians and Surgeons Faculty

### Darryl Abrams, MD

Assistant Professor of Medicine  
Columbia University College of Physicians and Surgeons  
NewYork-Presbyterian/Columbia University Medical Center

### Cara L. Agerstrand, MD

Assistant Professor of Medicine  
Columbia University College of Physicians and Surgeons  
NewYork-Presbyterian/Columbia University Medical Center

### Mauer Biscotti, MD

ECMO Surgical Fellow  
NewYork-Presbyterian/Columbia University Medical Center

### Wendy K. Chung, MD, PhD

Associate Professor of Pediatrics (in Medicine)  
Columbia University College of Physicians and Surgeons  
NewYork-Presbyterian/Columbia University Medical Center

### Marc L. Dickstein, MD

Professor of Anesthesiology at CUMC  
Division of Cardiothoracic Anesthesia  
NewYork-Presbyterian/Columbia University Medical Center



# NewYork-Presbyterian Columbia University College of Physicians and Surgeons Faculty

## Jennifer Haythe, MD

Assistant Professor of Medicine  
Columbia University College of Physicians and Surgeons  
Associate Medical Director, Adult Pulmonary Hypertension  
NewYork-Presbyterian/Columbia University Medical Center

## Usha Krishnan, MD

Associate Professor of Pediatrics  
Columbia University College of Physicians and Surgeons  
Associate Director, Pulmonary Hypertension Center,  
Pediatrics  
Director, Clinical Competency Committee - Pediatric  
Cardiology Fellowship Program  
NewYork-Presbyterian Morgan Stanley Children's Hospital/  
Columbia University Medical Center

## Joshua R. Sonett, MD, FACS

Edwin C. and Anne K. Weiskopf Professor of  
Surgical Oncology  
Columbia University College of Physicians and Surgeons  
Chief, General Thoracic Surgery  
Director, Price Center Comprehensive Lung Care  
NewYork-Presbyterian/Columbia University Medical Center

## Gordana Vunjak-Novakovic, PhD

Mikati Foundation Professor of Biomedical Engineering  
Professor of Medical Sciences  
Columbia University College of Physicians and Surgeons  
Director, Laboratory for Stem Cells and Tissue Engineering  
Columbia University - Biomedical Engineering



## Registration Fees

---

NYP = NewYork-Presbyterian

CUMC = Columbia University Medical Center (includes ColumbiaDoctors)

WCMC = Weill Cornell Medical College

### Early Registration Discount

*\*Must register by Thursday, December 18, 2014*

<b>A</b> Physicians	\$150	<b>D</b> NYP/CUMC/WCMC Allied Health Professionals	\$75
<b>B</b> NYP/CUMC/WCMC Physicians	\$100	<b>E</b> Fellows & Residents	\$25
<b>C</b> Allied Health Professionals	\$100	<b>F</b> NYP/CUMC/WCMC Fellows & Residents	FREE

### Registration Fees after Thursday, December 18, 2014

<b>G</b> Physicians	\$175	<b>J</b> NYP/CUMC/WCMC Allied Health Professionals	\$100
<b>H</b> NYP/CUMC/WCMC Physicians	\$125	<b>K</b> Fellows & Residents	\$50
<b>I</b> Allied Health Professionals	\$125	<b>L</b> NYP/CUMC/WCMC Fellows & Residents	FREE

## Payment Methods

---

**ONLINE:** To make an online credit card payment please visit:

[www.ColumbiaSurgeryCME.org](http://www.ColumbiaSurgeryCME.org).

For security purposes, credit card payments cannot be accepted in the mail or by phone. American Express, Discover, MasterCard and Visa only.

**BY MAIL:** Complete the attached registration form and mail together with full payment to:

Columbia University Medical Center  
Department of Surgery, External Affairs  
400 Kelby Street, 11th Floor  
Fort Lee, NJ 07024

Enclose a check or money order made payable to:

Columbia University Department of Surgery/PHT-ECMO CME

Checks must be in U.S. dollars drawn on a U.S. bank.



## Registration

Please register me for the continuing medical education program entitled:

*AT THE LEADING EDGE: New Frontiers in Pulmonary Hypertension and ECMO*

*Please use the key on the previous page to select your registration choice.*

*Space is limited, early registration is highly encouraged.*

### Early Registration Discount

- A** Physicians
- B** NYP/CUMC/WCMC Physicians
- C** Allied Health Professionals
- D** NYP/CUMC/WCMC Allied Health Professionals
- E** Fellows & Residents
- F** NYP/CUMC/WCMC Fellows & Residents

### Registration

- G** Physicians
- H** NYP/CUMC/WCMC Physicians
- I** Allied Health Professionals
- J** NYP/CUMC/WCMC Allied Health Professionals
- K** Fellows & Residents
- L** NYP/CUMC/WCMC Fellows & Residents

Please print or type

---

First Name	M.I.	Last Name	Degree(s)
------------	------	-----------	-----------

---

Company/Institution

---

Address

---

City	State	Zip
------	-------	-----

---

Daytime Phone	Daytime Fax
---------------	-------------

---

E-mail (required for confirmation purposes)

---

Specialty

---

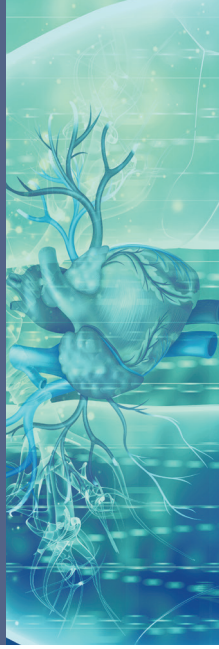
Special Needs (specify accommodations needed)

---

Attendee Signature	Date
--------------------	------

PLEASE NOTE: Registration is limited and will be handled on a first-come, first-served basis. Telephone registrations and/or cancellations are not accepted. If you cancel your registration at least ten business days prior to the course (Tuesday, December 16, 2014), we will refund your registration fee, less a \$25 administrative charge. Unfortunately no refunds can be made thereafter.

Columbia University Medical Center  
Department of Surgery, External Affairs  
400 Kelby Street, 11<sup>th</sup> Floor  
Fort Lee, New Jersey 07024



*AT THE LEADING EDGE:* **New Frontiers in  
Pulmonary Hypertension and ECMO**

Thursday, January 8, 2015  
8:00am – 5:00pm

NewYork-Presbyterian/  
Columbia University Medical Center  
Vivian and Seymour Milstein Family Heart Center

The College of Physicians and Surgeons  
designates this live activity for a maximum of  
6.5 AMA PRA Category 1 Credits™

[www.ColumbiaSurgeryCME.org](http://www.ColumbiaSurgeryCME.org)