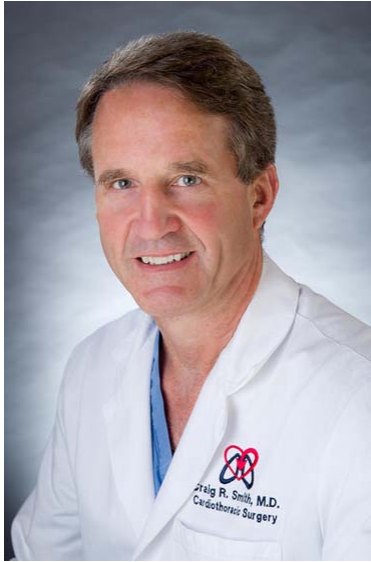




Columbia Surgery

Oncology and GI Newsletter



Letter from the Chair

September, 2016

Dear Colleague,

I'm pleased to report on our latest accomplishments in the Department of Surgery.

We have just received a \$225,000 grant from Governor Cuomo's office to increase screening for breast cancer patients over the next three years. We will now be able to alert patients who are past due for a screening to come in for their next mammogram.

At present, we are enrolling patients in four important clinical trials. One study explores the addition of immunomodulation therapy to neoadjuvant treatment of non-small cell lung cancer.

The EndoStim trial employs a new approach to GERD.

In addition, we are exploring the use of cryoablation for breast cancer and the use of genetic biomarkers and the MammaPrint assay for Chinese women with breast cancer.

Thanks to our new partnership with Medscape and WebMD, doctors in the US and around the world can now do a virtual consult with Columbia's leading experts in oncology, hematology, endocrinology, and surgery. Twenty-five of our physicians now serve as editors on Medscape Consult™ (<http://www.medscape.com/consult>), an innovative peer-to-peer digital platform providing point of care assistance

internationally.

I hope you will join us for our annual HeartSource networking day, our upcoming Aortovascular Summit, and our special program on Parathyroid Diseases and Osteoporosis.

Best Regards,

Craig R. Smith, MD, FACS
Chairman, Department of Surgery

Advances in Islet Cell Transplantation

The Pancreas Center (<http://columbiasurgery.org/pancreas>) at New York-Presbyterian/Columbia is the first center in the metropolitan area to offer autologous islet cell transplantation. Patients who need a total pancreatectomy for chronic pancreatitis or other benign diseases may be eligible for this procedure to prevent type 1 diabetes. To date, Beth Schrope, MD, PhD, FACS, (<http://columbiasurgery.org/node/1351>) has successfully performed 7 of these innovative surgeries with excellent results. The transplanted islet cells produce insulin, acting like a backup pancreas to regulate blood sugar. Afterward, roughly one-third of patients require no insulin therapy and about one-third require some insulin. Because the islet cells are taken from the patient's own pancreas, no immunosuppressant therapy is needed.

Read more: <http://columbiasurgery.org/news/2014/11/06/advances-treating-pancreatitis-autologous-islet-cell-transplantation>

Pancreas Transplant: Another Option for Patients with Type 1 Diabetes

A pancreas transplant restores the body's ability to control blood sugar levels allowing many patients to stop using insulin. This type of transplant can slow the progression of diabetes or reverse many of its secondary complications such as retinopathy and neuropathy. When a kidney transplant is performed at the same time, the transplanted pancreas protects the new kidney from damage caused by diabetes.

NYP/Columbia treats many patients with diabetes, especially those with complex medical and surgical challenges. We are also a national leader in clinical transplantation with a high volume and excellent patient outcomes.

Read more: <http://columbiasurgery.org/news/2014/11/06/advances-treating-pancreatitis-autologous-islet-cell-transplantation>

Immunotherapy as Neoadjuvant Therapy for Lung Cancer

Researchers at NYP/Columbia have recently launched an important trial of immunotherapy plus chemotherapy as neoadjuvant therapy for patients with locally advanced non-small cell lung cancer (NSCLC). Lung cancer is one of the most common cancers in both men and women worldwide, accounting for 13 percent of newly diagnosed cancers. Approximately 85 percent of all lung cancers are characterized as NSCLC.

Read more: <http://columbiasurgery.org/news/2016/09/13/immunotherapy-neoadjuvant-therapy-lung-cancer>

Cryotherapy for Breast Cancer

Columbia's Dr. Margaret Chen has been studying laser ablation, a technique that uses heat to burn away breast cancer cells. Now she is exploring cryotherapy to freeze them.

In all previous ablation trials, using laser or cryotherapy, the standard has been "ablate and then resect." Each participant had her tumor surgically removed to see if the treatment was successful. This will be the first trial where patients just receive the ablation therapy, without follow-up surgery.

Read more: <http://columbiasurgery.org/news/2016/09/13/cryotherapy-breast-cancer>

A Study of Molecular Risk Panels in Chinese Breast Cancer Patients

Dr. Margaret Chen is conducting the MammaPrint study looking at genetic biomarkers among Chinese women with early stage breast cancer in the US and Hong Kong, in collaboration with Dr. Ava Kwong. The trial will focus on the use of MammaPrint, TargetPrint, BluePrint and Research Gene Panel assays.

Read more: <http://columbiasurgery.org/news/2016/09/13/study-molecular-risk-panels-chinese-breast-cancer-patients>

Clinical Trial for Severe GERD

Gastroesophageal reflux disease is on the rise and now affects nearly 65 million Americans. Left untreated, over time GERD can lead to Barrett's esophagus, a dangerous pre-cancerous condition. Most individuals with GERD can be effectively treated using acid-blocking proton pump inhibitors (PPIs). However nearly 30 percent of patients continue to have symptoms.

We are currently enrolling patients aged 22 and 75 who suffer from chronic reflux, take a

PPI, and still have symptoms, in the LESS GERD Trial at NYP/Columbia. This study will examine the effectiveness of the EndoStim Lower Esophageal Sphincter (LES) Stimulation System, a minimally invasive approach for the treatment of severe reflux. The trial will look at GERD outcomes, such as the amount of acid in the esophagus, heartburn and regurgitation, and the affect of GERD on overall quality of life.

To learn more about this trial, go to <http://www.LESSGERD.com>. On this site, patients will also be able to take an online screening test.



New Faculty

The Department of Surgery is pleased to welcome Nigel W. Bunnett, BSc, PhD, an internationally known expert on the mechanisms of pain, itch and neurogenic inflammation.

Dr. Bunnett has published approximately 350 research articles, reviews and chapters, which have been cited over 25,000 times. His contributions have been widely recognized and he has received the Australia Fellowship, an NIH MERIT Award, the Novartis Neurogastroenterology Award, the Jansen Award for Basic Research in Gastroenterology, and the Victor Mutt Award for Research in Regulatory Peptides.

Read more about Dr. Bunnett's research here:

<http://columbiasurgery.org/news/2016/09/01/please-welcome-dr-nigel-w-bunnett-who-has-joined-department-surgery-august-8-2016>

Presentations and Research

BREAST SURGERY

Presentations

10th ZEISS INTRABEAM System User Meeting Thursday, June 30th & Friday, July 1st, 2016 University Mannheim | Bismarckstrasse 42 | 68131 Mannheim

Gomberawalla A. Intraoperative radiation therapy for ductal carcinoma in situ: The Columbia experience.

Pappa M. Use of intraoperative radiation therapy in the conservative treatment of invasive male breast cancer.

Publications

Boughey JC, Attai DJ, Chen SL, Cody HS, Dietz JR, Feldman SM, Greenberg CC, Kass RB, Landercasper J, Lemaine V, MacNeill F, Song DH, Staley AC, Wilke LG, Willey SC, Yao KA, Margenthaler JA. Contralateral Prophylactic Mastectomy (CPM) Consensus

Statement from the American Society of Breast Surgeons: Data on CPM Outcomes and Risks. *Ann Surg Oncol*. 2016 Jul 28. [Epub ahead of print]

[Journal link](#)

[Pubmed link](#)

Coromilas EJ, Wright JD, Huang Y, Feldman S, Neugut AI, Hillyer GC, Chen L, Hershman DL. Axillary evaluation and lymphedema in women with ductal carcinoma in situ. *Breast Cancer Res Treat*. 2016 Jul;158(2):373-84. doi: 10.1007/s10549-016-3890-0. Epub 2016 Jun 30.

[Journal link](#)

[Pubmed link](#)

Gomberawalla A, Feldman S. SYMPHA: New innovation, not old practice. *J Clin Oncol* 2016 Jun13. Pii: JCO678987 [Epub ahead of print].

[Journal Link](#)

[PubMed Link](#)

Mango V, Ha R, Gomberawalla A, Wynn R, Feldman S. Evaluation of the SAVI SCOUT Surgical Guidance System for Localization and Excision of Nonpalpable Breast Lesions: A Feasibility Study. *AJR Am J Roentgenol*. 2016 Jun 15:W1-W4. [Epub ahead of print]

[Journal link](#)

[PubMed link](#)

CENTER INNOVATION AND OUTCOMES RESEARCH

Presentations

American Diabetes Association (ADA) 76th Scientific Session. New Orleans, LA: June 10-14, 2016.

Cai J, Wang Y, Baser O, Xie L, Diels J, Neslusan C, Chow W. Comparative persistence with antihyperglycemic agents (AHA) used to treat type 2 diabetes mellitus (T2DM) in the real world.

Alzheimer's Association International Conference (AAIC) Annual Conference. Toronto, Canada: July 24-28, 2016.

Black CM, Hu X, Khandker RK, Ambegaonkar BM, Kariburyo MF, Xie L, Baser O, Yuce H. Comparison of all-cause mortality rate and economic burden between newly diagnosed Alzheimer's disease patients who received anti-dementia treatment versus not: A longitudinal retrospective study.

Publications

Cai J, Wang Y, Baser O, Xie L, Chow W. Comparative persistence and adherence with newer antihyperglycemic agents to treat patients with type 2 diabetes in the United States. *J Med Econ*. 2016 Jul 12:1-12. [Epub ahead of print]

[Journal link](#)

[Pubmed link](#)

COLON AND RECTAL SURGERY

Publications

Murray AC, Kiran RP. Bowel Preparation: Are Antibiotics Necessary for Colorectal Surgery? *Adv Surg*. 2016 Sep;50(1):49-66. doi: 10.1016/j.yasu.2016.03.005. Review.

[Journal link](#)

[Pubmed link](#)

Murray AC, Mauro C, Rein J, Kiran RP. 30-day mortality after elective colorectal surgery can reasonably be predicted. *Tech Coloproctol*. 2016 Aug;20(8):567-76. doi: 10.1007/s10151-016-1503-x. Epub 2016 Jul 15.

[Journal link](#)

[Pubmed link](#)

Murray AC, Kiran RP. Benefit of mechanical bowel preparation prior to elective colorectal surgery: current insights. *Langenbecks Arch Surg*. 2016 Jun 20. [Epub ahead of print] Review.

[Journal Link](#)

[PubMed Link](#)

Pappou EP, Kiran RP. The Failed J Pouch. *Clin Colon Rectal Surg*. 2016 Jun;29(2):123-9. doi: 10.1055/s-0036-1580724. Review.

[Journal Link](#)

[PubMed Link](#)

GI/ENDOCRINE

Publications

Edgington-Mitchell LE, Wartmann T, Fleming AK, Gocheva V, van der Linden WA,

Withana NP, Verdoes M, Aurelio L, Edgington-Mitchell D, Lieu T, Parker BS, Graham B, Reinheckel T, Furness JB, Joyce JA, Storz P, Halangk W, Bogyo M, Bunnett NW. Legumain is Activated in Macrophages during Pancreatitis. *Am J Physiol Gastrointest Liver Physiol*. 2016 Aug 11:ajpgi.00047.2016. doi: 10.1152/ajpgi.00047.2016. [Epub ahead of print]

[Journal link](#)

[Pubmed link](#)

Lay J, Carbone SE, DiCello JJ, Bunnett NW, Canals M, Poole DP. Distribution and trafficking of the μ -opioid receptor in enteric neurons of the guinea pig. *Am J Physiol Gastrointest Liver Physiol*. 2016 Aug 1;311(2):G252-66. doi: 10.1152/ajpgi.00184.2016. Epub 2016 Jun 30.

[Journal link](#)

[Pubmed link](#)

Leinwand JC, Chabot JA, Kluger MD. Preventing recurrence of diffuse malignant peritoneal mesothelioma. *Expert Rev Anticancer Ther*. 2016 Aug 3. [Epub ahead of print]

[Journal link](#)

[Pubmed link](#)

Kuo JH, Chabot JA, Lee JA. Increased incidence of thyroid cancer among breast cancer survivors: an analysis of the SEER 9-database. *International Journal of Endocrine Oncology* (2016) 3(1), 21-31.

[Journal link](#)

McManus C, Wingo M, Chabot JA, Lee JA, Kuo JH. Septuagenarians and Older Patients are at a Higher Risk of Mortality with Adrenal Metastasectomy: An Analysis of the HCUP-NIS Database From 1992 to 2011. *World J Surg*. 2016 May 3. [Epub ahead of print]

[Journal link](#)

[Pubmed link](#)

Packey CD, Wilechansky RM, Khan AS, Weisberg SP, Chabot JA, Gonda TA. Pancreatic Neuroendocrine Tumor Associated With Antibodies to Voltage-Gated Potassium Channels: A Case Report and Review of the Literature. *Pancreas*. 2016 Sep;45(8):e42-3. doi: 10.1097/MPA.0000000000000651.

[Journal link](#)

[Pubmed link](#)

Poole DP, Bunnett NW. G Protein-Coupled Receptor Trafficking and Signalling in the Enteric Nervous System: The Past, Present and Future. *Adv Exp Med Biol*. 2016;891:145-

52. doi: 10.1007/978-3-319-27592-5_14.

[Journal link](#)

[Pubmed link](#)

Troppmann C, Santhanakrishnan C, Kuo JH, Bailey CM, Perez RV, Wong MS. Impact of panniculectomy on transplant candidacy of obese patients with chronic kidney disease declined for kidney transplantation because of a high-risk abdominal panniculus: A pilot study. *Surgery*. 2016 Jun;159(6):1612-22.

[Journal link](#)

[Pubmed link](#)

LIVER TRANSPLANTATION

Publications

Bhatti NK, Karimi Galougahi K, Paz Y, Nazif T, Moses JW, Leon MB, Stone GW, Kirtane AJ, Karpaliotis D, Bokhari S, Hardy MA, Dube G, Mohan S, Ratner LE, Cohen DJ, Ali ZA. Diagnosis and Management of Cardiovascular Disease in Advanced and End-Stage Renal Disease. *J Am Heart Assoc*. 2016 Aug 4;5(8). pii: e003648. doi: 10.1161/JAHA.116.003648.

[Journal link](#)

[Pubmed link](#)

Dew MA, DiMartini AF, Ladner DP, Simpson MA, Pomfret EA, Gillespie BW, Merion RM, Zee J, Smith AR, Holtzman S, Sherker AH, Weinrieb R, Fisher RA, Emond JC, Freise CE, Burton JR Jr, Butt Z. Psychosocial Outcomes 3 to 10 Years After Donation in the Adult to Adult Living Donor Liver Transplantation Cohort Study. *Transplantation*. 2016 Jun;100(6):1257-69. doi: 10.1097/TP.0000000000001144.

[Journal Link](#)

[PubMed Link](#)

Emond JC. Live Donor Liver Transplantation: An International Perspective. *Transplantation*. 2016 Jun;100(6):1182-3. doi: 10.1097/TP.0000000000001220

[Journal Link](#)

[PubMed Link](#)

Halazun KJ, Przybyszewski EM, Griesemer AD, Cherqui D, Michelassi F, Guarrera JV, Kato T, Brown RS Jr, Emond JC, Samstein B. Leaning to the Left: Increasing the Donor Pool by Using the Left Lobe, Outcomes of the Largest Single-center North American Experience of Left Lobe Adult-to-adult Living Donor Liver Transplantation. *Ann Surg*.

2016 Sep;264(3):448-56. doi: 10.1097/SLA.0000000000001860.

[Journal link](#)

[Pubmed link](#)

Martinez M, Brodli S, Griesemer A, Kato T, Harren P, Gordon B, Parker T, Levine D, Tyberg T, Starc T, Cho I, Min J, Elmore K, Lobritto S, Hudgins LC. Effects of Liver Transplantation on Lipids and Cardiovascular Disease in Children With Homozygous Familial Hypercholesterolemia. *Am J Cardiol.* 2016 Aug 15;118(4):504-10. doi: 10.1016/j.amjcard.2016.05.042. Epub 2016 May 28.

[Journal link](#)

[Pubmed link](#)

Mohan S, Foley K, Chiles MC, Dube GK, Patzer RE, Pastan SO, Crew RJ, Cohen DJ, Ratner LE. The weekend effect alters the procurement and discard rates of deceased donor kidneys in the United States. *Kidney Int.* 2016 Jul;90(1):157-63. doi: 10.1016/j.kint.2016.03.007. Epub 2016 May 12.

[Journal link](#)

[Pubmed link](#)

Pomposelli JJ, Goodrich NP, Emond JC, Humar A, Baker TB, Grant DR, Fisher RA, Roberts JP, Olthoff KM, Gillespie BW, Merion RM. Patterns of Early Allograft Dysfunction in Adult Live Donor Liver Transplantation: The A2ALL Experience. *Transplantation.* 2016 Jul;100(7):1490-9. doi: 10.1097/TP.0000000000001240.

[Journal link](#)

[Pubmed link](#)

Pomposelli JJ, Goodrich NP, Emond JC, Humar A, Baker TB, Grant DR, Fisher RA, Roberts JP, Olthoff KM, Gillespie BW, Merion RM. Patterns of Early Allograft Dysfunction in Adult Live Donor Liver Transplantation: The A2ALL Experience. *Transplantation.* 2016 Jul;100(7):1490-9. doi: 10.1097/TP.0000000000001240.

[Journal Link](#)

[PubMed Link](#)

Continuing Medical Education Programs

Please join us for the following continuing education programs this fall.

Columbia HeartSource Annual Network Day

Thursday, October 6, 2016 - 7:00am to 3:00pm

<http://columbiasurgery.org/events/2016-10-06-150000/columbia-heartsource-annual-network-day>



Aortovascular Summit 2016:
A Multidisciplinary Team Approach

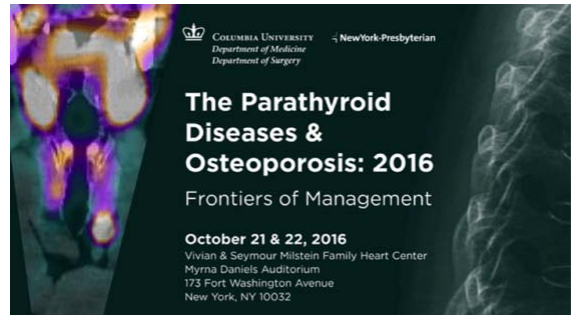
Thursday, September 29, 2016 - 11:00am to
Friday, September 30, 2016 - 5:00pm

<http://columbiasurgery.org/events/2016-10-06-150000/columbia-heartsource-annual-network-day>



The Parathyroid Diseases and Osteoporosis

Leaders: John P. Bilezikian, MD and James A. Lee, MD



<http://columbiamedicinecme.org/Endo2016.html>

SAVE THE DATE: Innovative Therapeutics for Advanced Lung Disease, March 2, 2017

Topics will include

- Pulmonary Vascular Disease: Advanced medical therapies, CTEPH-PTE, Elective and non-elective surgery and PH: Role for a high-risk surgical team
- Chronic Respiratory Disease: COPD, LVRS and Bronchoscopy LVR, Interstitial disease
- Cancer and ESLD, Diaphragm Disorders, Reflux disease
- When Therapy Fails: Bridge to Transplantation, Anticoagulation, ECMO
- The Future: Next Generation ECMO and Artificial Lungs, Stem Cell Therapy, Bioengineering

A full agenda will be available in late October.

More information: www.ColumbiaSurgerCME.org or call 212-304-7817

Webinars

Our vast library of videos and webinars is available 24/7 for your convenience.

Cardiovascular Webinars for physicians are available here:

<http://columbiasurgery.org/education-training/cardiovascular-webinars>.

CTEPH and PTE: A Conversation with the

Experts: [http://www.tctmd.com/multimedia/?](http://www.tctmd.com/multimedia/?section=/video/webcasts/2015/d37fe89795254121ac4d1ffe3b1db92d)

[section=/video/webcasts/2015/d37fe89795254121ac4d1ffe3b1db92d](http://www.tctmd.com/multimedia/?section=/video/webcasts/2015/d37fe89795254121ac4d1ffe3b1db92d)

Left Atrial Appendage Occlusion for Stroke Prevention in Atrial Fibrillation: The Future is

Now: [http://www.tctmd.com/multimedia/?](http://www.tctmd.com/multimedia/?section=/video/webcasts/2015/aa90622ccb04452fa6ec2251704db5ac)

[section=/video/webcasts/2015/aa90622ccb04452fa6ec2251704db5ac](http://www.tctmd.com/multimedia/?section=/video/webcasts/2015/aa90622ccb04452fa6ec2251704db5ac)

Emboic Protection in TAVR - Is it Necessary? [http://www.tctmd.com/multimedia/?](http://www.tctmd.com/multimedia/?section=/video/webcasts/2015/1265b28598f1496f8159930e57ea082f)

[section=/video/webcasts/2015/1265b28598f1496f8159930e57ea082f](http://www.tctmd.com/multimedia/?section=/video/webcasts/2015/1265b28598f1496f8159930e57ea082f)

New Frontiers of Treatment for Mitral Valve

Disease: [http://www.tctmd.com/multimedia/?](http://www.tctmd.com/multimedia/?section=/video/webcasts/2015/1906c73f687a4dbabff32cd9b53d2901)

[section=/video/webcasts/2015/1906c73f687a4dbabff32cd9b53d2901](http://www.tctmd.com/multimedia/?section=/video/webcasts/2015/1906c73f687a4dbabff32cd9b53d2901)

Who is a Good Surgical Candidate in the Era of TAVR?

[http://www.tctmd.com/multimedia/?](http://www.tctmd.com/multimedia/?section=/video/webcasts/2015/8086600e41d247228009b66444fcb983)

[section=/video/webcasts/2015/8086600e41d247228009b66444fcb983](http://www.tctmd.com/multimedia/?section=/video/webcasts/2015/8086600e41d247228009b66444fcb983)

Emerging Therapies for Systolic Heart Failure and Pulmonary

Hypertension: [http://www.tctmd.com/multimedia/?](http://www.tctmd.com/multimedia/?section=/video/webcasts/2015/5596c55ca3df45429ca286a917ef364d)

[section=/video/webcasts/2015/5596c55ca3df45429ca286a917ef364d](http://www.tctmd.com/multimedia/?section=/video/webcasts/2015/5596c55ca3df45429ca286a917ef364d)

Cardiac Replacement Therapy: LVAD and/ or Transplant for Advanced Heart

Failure: [http://www.tctmd.com/multimedia/?](http://www.tctmd.com/multimedia/?section=/video/webcasts/2015/221d3131f961469cbbd3eccd09c3fcc0e)

[section=/video/webcasts/2015/221d3131f961469cbbd3eccd09c3fcc0e](http://www.tctmd.com/multimedia/?section=/video/webcasts/2015/221d3131f961469cbbd3eccd09c3fcc0e)

Patient Referral

To refer elective patients, call 212.305.7013 or 212.304.7810.

Email, info@columbiasurgery.org

Urgent and emergency transfers: 1.800.NYP.STAT

Physician Referral

Form: https://secure.cumc.columbia.edu/surgery/form/physician_referrals.html
