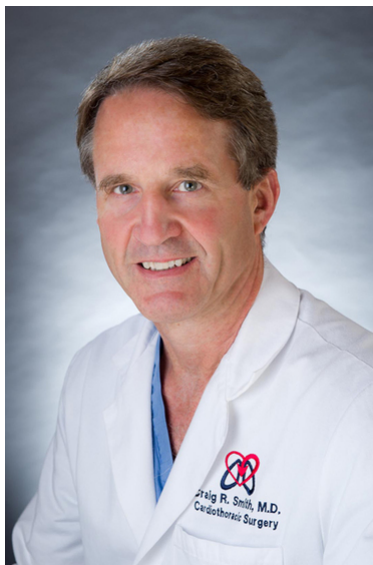




Columbia Surgery

# Oncology and GI Newsletter



## Message from the Chairman

April 2016

Dear Doctor,

You are receiving this e-letter because we know that the best patient care takes a solid team, and we greatly value your partnership with the Department of Surgery in the care of patients with surgical conditions. We would like to let you know about several new and expanding programs that may be important to your patients with breast, colorectal, liver/GI, or other conditions.

In addition, we hope you will join us this spring at our upcoming webinars and CME accredited programs, including [The Fifth Annual Peter D. Stevens Course on Innovations in Digestive Care](#), April 21st-22nd, and our annual [Breast Cancer Management](#), May 3rd.

Best regards,  
Craig Smith, MD

Craig R. Smith, MD, FACS  
Chairman, Department of Surgery

### **Role of BRCA in Pancreatic Cancer**

Researchers at the Pancreas Center have published results of their research that found approximately 10 percent of pancreatic cancers seen at this center are associated with breast and ovarian cancer syndromes caused by BRCA1 and BRCA2 mutations. Other centers have reported an even higher link with BRCA mutations.

[Read more](#) about this groundbreaking research and how the Pancreas Center is incorporating this knowledge in diagnosis and treatment.

### **Minimally Invasive Thyroid Lobectomy**

Surgeons at the New York Thyroid Center offer advanced expertise in minimally invasive surgery for thyroid disease. [James Lee, MD](#), Chief of Endocrine Surgery and Director of the innovative CollectedMed education project for physicians and surgeons, explains minimally invasive thyroid lobectomy in an animated video [here](#).

Surgeons at the New York Thyroid Center now see patients at ColumbiaDoctors Midtown, 51 W. 51st St., New York, as well as the main campus at 161 Fort Washington Ave.

## Pancreatitis

The Pancreas Center at NewYork-Presbyterian/Columbia has advanced expertise in the treatment of patients with [pancreatic pseudocysts](#) and [pancreatitis](#), and is the only center in New York to be designated a Center for the Care and Treatment of Pancreatitis by the [National Pancreas Foundation](#). Just thirty centers in the nation have earned this designation.

Learn more [here](#), or call 212.305.9467 with questions or patient referrals.

## Physician Training and Education

The NYP/Columbia Department of Surgery invites you to attend our [CME events](#).

**Coming this spring:**

[The Fifth Annual Peter D. Stevens Course on Innovations in Digestive Care](#)



April 21st-22nd, 2016

NewYork-Presbyterian/Columbia University Medical Center

Click [here](#) for course information

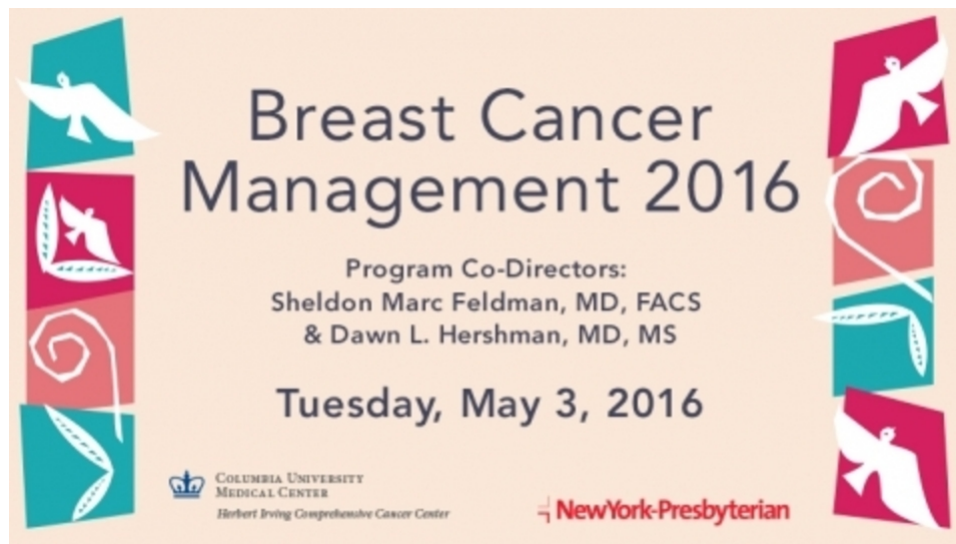
Click [here](#) for course brochure

Click [here](#) to register

### Overview:

This two day course will inform participants of updates in innovations for the management of gastrointestinal diseases. The program will offer a forum to discuss optimal approaches between endoscopic and surgical management in the setting of these new technologies and procedures. Internationally and nationally recognized faculty will address issues in current clinical practice, complications and pitfalls of newer technologies, and the evolution of the field. Attendee participation and interaction will be emphasized and facilitated through Q&A sessions, live OR and interactive case presentations and hands-on animal tissue labs.

### [Breast Cancer Management 2016](#)



May 3rd, 2016

NewYork-Presbyterian/Columbia University Medical Center

Click [here](#) for course information

Click [here](#) for course brochure

Click [here](#) to register

### Overview:

This program will review the current state-of-the-art in breast cancer diagnosis and management, highlighting the key advances in providing a personalized approach to breast cancer screening, prevention, treatment and survivorship. Emphasis will be given on improvements in providing precise breast cancer management through enriched understanding of tumor biology and genetics. Active areas of most promising research and clinical trials will be discussed. The format of this program will consist of lectures with active audience feedback discussion. Radiology, medical oncology, genetics, surgery, pathology, and radiation oncology will present areas of clinical relevance and current controversy will be highlighted.

### **Educational Resources at NYP/Columbia Department of Surgery**

Archived educational events may be found [here](#).

Our vast [Media Learning Center](#), which includes a library of videos and webinars, is available 24/7 for your convenience.

### **Recent Faculty Publications**

The following are a few recent faculty publications that may be of interest.

[Kuo JH](#), [Chabot JA](#), [Lee JA](#). Breast cancer in thyroid cancer survivors: An analysis of the Surveillance, Epidemiology, and End Results-9 database. Surgery. 2016 Jan;159(1):23-30. doi: 10.1016/j.surg.2015.10.009. Epub 2015 Oct 29.  
[Link to Publication](#)  
[Additional Link to Publication](#)

[Lee-Kong S](#), [Kiran RP](#). Ongoing challenges and controversies in ulcerative colitis surgery. Expert Rev Gastroenterol Hepatol. 2015 Dec 16:1-5. [Epub ahead of print]  
[Link to Publication](#)

[Lee-Kong S](#), Lisle D. Surgical Management of Complicated Colon Cancer. Clin Colon Rectal Surg. 2015 Dec;28(4):228-33. doi: 10.1055/s-0035-1564621. Review.  
[Link to Publication](#)  
[Additional Link to Publication](#)

[Kuo JH](#), [Chabot JA](#), [Lee JA](#). Increased incidence of breast cancer among thyroid cancer survivors: an analysis of the SEER 9-database. Surgery. 2015 Nov. Surgery. 2016 Jan;159(1):23-30  
[Link to Publication](#)  
[Additional Link to Publication](#)

Lee L, Mitmaker EJ, [Chabot JA](#), [Lee JA](#), [Kuo JH](#). Cost-Effectiveness of Diagnostic Lobectomy Versus Observation for Thyroid Nodules >4 cm. Thyroid. 2016 Jan 22. [Epub ahead of print]  
[Link to Publication](#)

Ex vivo pancreaticoduodenectomy and liver autotransplantation for pancreatic head tumor with extensive involvement of the hepatoduodenal ligament. Matsuoka N, Weiner JI, [Griesemer AD](#), Samstein BB, Zhao Y, [Emond JC](#), [Kato T](#). Liver Transpl. 2015 Dec;21(12):1553-6. doi: 10.1002/lt.24229. No abstract available.  
[Link to Publication](#)  
[Additional Link to Publication](#)

## Webinars

The Division continually holds webinars and live educational seminars for physicians. You may access these events both live and in archives after-the-fact at our web site.



Cardiovascular Webinars for physicians are available [here](#).

[CTEPH and PTE: A Conversation with the Experts](#)

[Left Atrial Appendage Occlusion for Stroke Prevention in Atrial Fibrillation:](#)

[The Future is Now](#)

[Emboic Protection in TAVR - Is it Necessary?](#)

[New Frontiers of Treatment for Mitral Valve Disease](#)

[Who is a Good Surgical Candidate in the Era of TAVR?](#)

[Emerging Therapies for Systolic Heart Failure and Pulmonary Hypertension](#)

[Cardiac Replacement Therapy: LVAD and/ or Transplant for Advanced Heart Failure](#)

Please encourage your patients to attend our free community events this spring:

[Lung Health Awareness Day](#)

Information and Registration:

Jessica Mead, 212.304.7817 or [jas2134@cumc.columbia.edu](mailto:jas2134@cumc.columbia.edu)



**Patient Referral**

To refer elective patients, call 212.305.7013 or 212.304.7810.

And email, [info@columbiasurgery.org](mailto:info@columbiasurgery.org)

Urgent and emergency transfers: 1.800.NYPSTAT

[Physician Referral Form](#)





---

177 Fort Washington Ave Suite 7-435 | New York, NY 10032 US

---